



ZHEHENG STEEL

Wenzhou Zheheng Steel Industry Co.,Ltd  
stainless-steelseamlesspipe.com

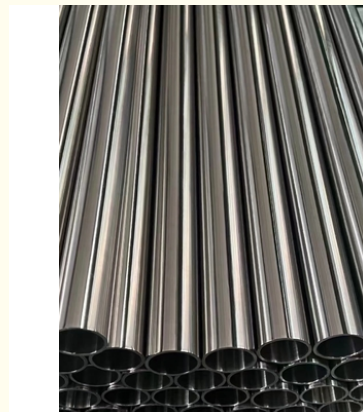
## 316H High Carbon Stainless Steel Pipe With Industrial Settings

### Our Product Introduction

for more products please visit us on [stainless-steelseamlesspipe.com](http://stainless-steelseamlesspipe.com)

#### Basic Information

- Place of Origin: Wenzhou,China
- Brand Name: Zheheng
- Certification: ISO9001
- Model Number: 316H
- Minimum Order Quantity: MOQ 1Ton
- Packaging Details: In wooded cases or pallets,or as for clients requirement
- Delivery Time: 7-15 working days after receiving payment
- Payment Terms: L/C, D/P, T/T, Western Union
- Supply Ability: 1000 Ton/Tons per Month



#### Product Specification

- Thickness: 1mm-150mm(SCH10-XXS) Or As Required
- OD: 6mm-2500mm (3/8"-100") Or As Required
- Section Shape: Round,Square,rectangular
- Surface Finish: Polishing, Hair Line,Pickling
- Price Terms: FOB,CIF,CFR,EXW
- Length: 1000-12000mm
- Usage: Industrial And Commercial Applications
- Technique: Cold Drawn Or Hot Rolled
- Steel Grade: 300 Series
- Highlight: **High Carbon Stainless Steel SeamlessPipe, 316H Stainless Steel Pipe, Stainless Steel Pipe 12000mm**



## Product Description

### General Properties

Alloy 316H (UNS S31609) is a high carbon modification of Alloy 316 developed for use in elevated temperature service. The alloy has higher strength at elevated temperatures and is used for structural and pressure vessel applications at temperatures above 932°F (500°C). The higher carbon content of 316H also delivers higher tensile and yield strength than 316/316L and its austenitic structure provides excellent toughness down to cryogenic temperatures. It is often used in process streams containing chlorides or halides. The alloy resists atmospheric corrosion, as well as, moderately oxidizing and reducing environments. It also resists corrosion in polluted marine conditions. Alloy 316H is non-magnetic in the annealed condition. It cannot be hardened by heat treatment, however the material will harden due to cold working. It can be easily welded and processed by standard shop fabrication practices.

### Use

316H. Due to its superior corrosion resistance, 316H stainless steel is ideal for use in marine environments or any situation where exposure to saltwater or other corrosive elements is likely. It's also often used in medical equipment due to its resistance to bacterial growth and corrosion-resistance properties. Additionally, due to its strength and durability, it's commonly used in construction projects such as bridges, buildings, and other infrastructure projects. Finally, its superior malleability makes it perfect for DIY projects like custom kitchen sinks or outdoor furniture.

### Physical properties

Density	Specific Heat
0.285 lbs/in <sup>3</sup> 8.00 g/cm <sup>3</sup>	0.11 BTU/lb-°F (32 – 212°F) 500 J/kg-°K (0 – 100°C)
Electrical Resistivity	Modulus of Elasticity
74 Microhm-cm at 20°C 29.1 Microhm-in at 68°F	29.0 x 10 <sup>6</sup> psi 200 GPa
Melting Range	Thermal Conductivity 212°F (100°C)
2507 – 2552°F 1375 – 1400°C	8.7 BTU/hr/ft <sup>2</sup> /ft/°F 15 W/m-°K

### Specification

Ends	Plain end
Production process	The round steel→Peeling→Heating→Perforation→Acid picking→End preparation→Grinding→Lubricating→Cold-drawn→Degreasing→Annealing→Straightening→Acid picking→Finishing→Testing/inspection→seamless pipe→marking→packing→weighs→weighs→products storage→leaves the plant
Delivery time	within 10 -15 days.
Payment Terms	40% prepayment Balance before loading.
Shipping Terms	FOB NINGBO, after the inspection of goods at supplier's warehouse
Pack age	Standard export seaworthy package, or as required.

### 316H stainless pipe Chemical Composition

316H Stainless Steel is composed of molybdenum-bearing austenitic stainless steel developed for elevated-temperature applications. It has excellent corrosion resistance and creep strength. The addition of molybdenum provides greater corrosion resistance against chlorides and other industrial solvents, making it an ideal material for Inconel sheets used to foster a safe and secure environment in construction sites as well as various industrial settings.

Grade	C	Si	Mn	P	S	Ni	Mo	Cr
316H	0.04-0.1	0.75	2	0.045	0.03	10.00-14.00	2.0-3.0	16.00-18.00

### Mechanical composition

316H has superior strength and excellent corrosion resistance, making it an ideal choice for all forms of metalworking. It can withstand temperatures up to 1010 degrees Celsius, making it useful for welding and other fabrication needs. Additionally, 316H stainless steel demonstrates durability even in extreme conditions like high-pressure and high-temperature environments. Its hardness makes it ideal for use with machining and grinding, while its formability gives it flexibility when needed. All these attributes make 316H stainless steel a popular choice in industrial settings.

Yield Strength	Ultimate Tensile	Elongation	Hardness
.2% Offset	Strength	in 2 in.	

psi (min.)	(MPa)	psi (min.)	(MPa)	%	-
30,000	205	75,000	515	40	95 Rockwell B

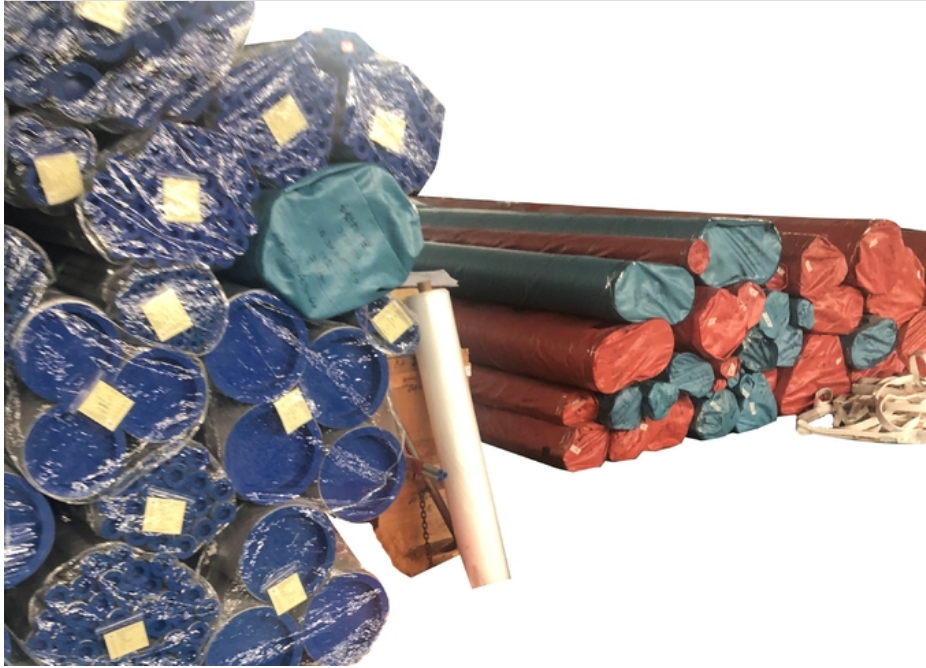
## Product Testing

Coating Thk Test  
Geometry inspection  
Ultrasonic Inspection  
Nondestructive Testing  
Hydrostatic Testing

## Package Process

- 1.with plastic cap to protect both ends
- 2.weaving bag wrapped outside the pipe
- 3.then pack into wooden case.

## Image



ZHEHENG STEEL

Wenzhou Zheheng Steel Industry Co.,Ltd

☎ 15858820108

✉ sales@zhehengsteel.com

🌐 stainless-steelseamlesspipe.com

No999 .wenzhou airport wenzhou city,zhejiang china