



ZHEHENG STEEL

Wenzhou Zheheng Steel Industry Co.,Ltd
stainless-steelseamlesspipe.com



Polishing Stainless Steel Welded Tube 1/2 SCH160 ASME SA312 316L

Our Product Introduction

for more products please visit us on stainless-steelseamlesspipe.com

Basic Information

- Place of Origin: Wenzhou, China
- Brand Name: Zheheng
- Certification: ISO9001
- Model Number: 316L
- Minimum Order Quantity: MOQ 1Ton
- Packaging Details: In wooded cases or pallets, or as for clients requirement
- Delivery Time: 7-15 working days after receiving payment
- Payment Terms: L/C, D/P, T/T, Western Union
- Supply Ability: 1000 Ton/Tons per Month



Product Specification

- Thickness: 1mm-150mm(SCH10-XXS) Or As Required
- OD: 6mm-2500mm (3/8"-100") Or As Required
- Section Shape: Round, Square, rectangular
- Surface Finish: Polishing, Hair Line, Pickling
- Price Terms: FOB, CIF, CFR, EXW
- Length: 1000-12000mm
- Usage: Industry
- Technique: Cold Drawn Or Hot Rolled
- Steel Grade: 200 Series, 300 Series, 400 Series
- Highlight: **Polishing Stainless Steel Welded Tube,
Stainless Steel Tube 150mm,
ASTM 316L Stainless Steel Tube**



Product Description

Characteristic

Stainless Steel 316L Pipe is made up of an austenitic stainless steel that has chromium, nickel and molybdenum in its composition with low carbon content than the 316 grade. The low carbon content of the pipes makes it easier for welding applications. The pipes can also operate under elevated temperatures up to 870 degrees Celsius. 316L have higher molybdenum content and are better for overall corrosion resistance. Common uses for type 316L stainless steel include in the communication industry, ship and vehicle, machinery industry, food industry.

Specification

Ends	Plain end
Standard	ASTM JIS DIN ASME
Delivery time	within 45 -60 days.
Payment Terms	40% prepayment Balance before loading.
Shipping Terms	FOB NINGBO, after the inspection of goods at supplier's warehouse
Package	Standard export seaworthy package, or as required.

Application

Chemical: chemical containers, pressure vessels, and industrial equipment

Water treatment: woven or welded screens for water filtration

Pulp and paper: used in paper machines to avoid iron contamination

Automotive: threaded fasteners, springs, and furnace parts

Medical: medical equipment and orthopedic implants

Dental: dental implants, orthodontic appliances, and various dental instruments Semiconductor: semiconductor manufacturing equipment and cleanroom environments

Food processing: food preparation surfaces, equipment, and appliances Aerospace: aircraft structures, fasteners, turbine blades, and exhaust systems

316L stainless pipe Chemical Composition

Grade	C ≤	Si ≤	Mn ≤	P ≤	S ≤	Ni ≤	Cr ≤
316L	0.035	0.75	2	0.045	0.03	10.00-15.00	16.00-18.00

Mechanical Composition

Grade	Tensile	Yield	%Age	Hardness (Max)	
	Strength Mpa, (Min)	Strength	Elongatio n		
		Mpa, (Min)	in 50mm gauge length min	BHN	Rb
316L	485	170	40	217	95

Product Testing

Coating Thk Test

Geometry inspection

Ultrasonic Inspection

Nondestructive Testing

Hydrostatic Testing

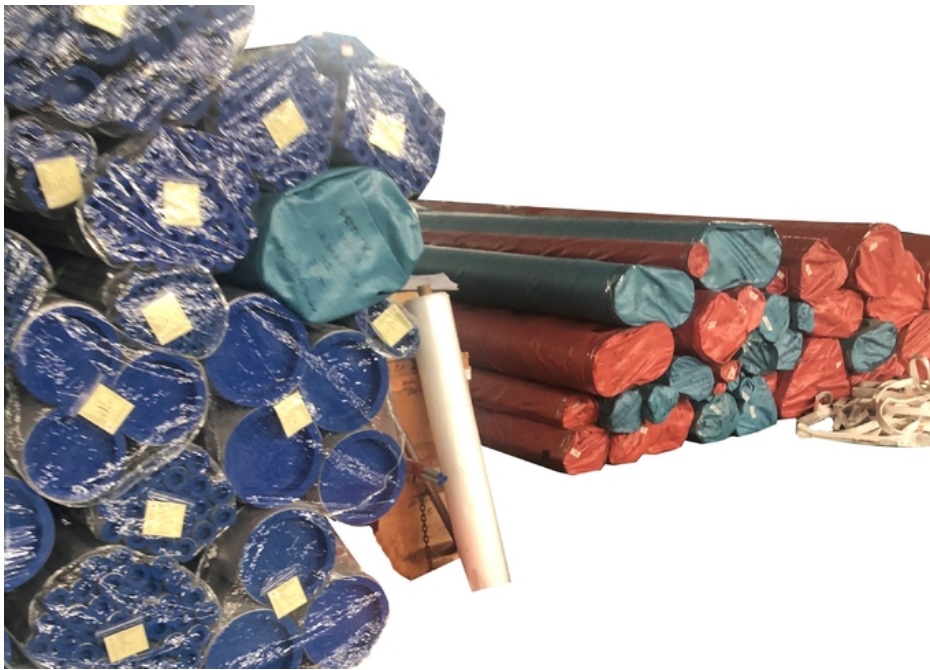
Package Process

1. with plastic cap to protect both ends

2. weaving bag wrapped outside the pipe

3. then pack into wooden case.

Image



ZHEHENG STEEL

Wenzhou Zheheng Steel Industry Co.,Ltd

☎ 15858820108

✉ sales@zhehengsteel.com

🌐 stainless-steelseamlesspipe.com

No999 .wenzhou airport wenzhou city,zhejiang china