



ZHEHENG STEEL

Wenzhou Zheheng Steel Industry Co.,Ltd  
stainless-steelseamlesspipe.com



## Asme Stainless Seamless Steel Pipe S30100 JIS SUS301 1mm For Handrail Rolling

Our Product Introduction

for more products please visit us on [stainless-steelseamlesspipe.com](http://stainless-steelseamlesspipe.com)

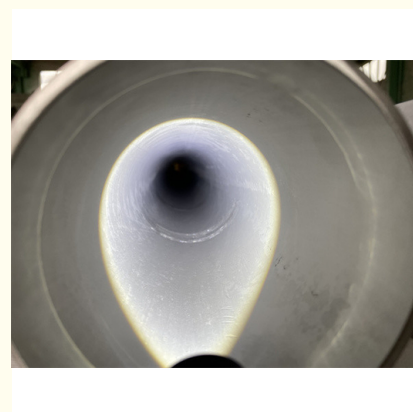
### Basic Information

- Place of Origin: Wenzhou, China
- Brand Name: ZHE HENG
- Certification: BV, PED, ISO9001
- Model Number: Asme S30100, JIS SUS301
- Minimum Order Quantity: 500 kg
- Price: \$1000-4200/Ton
- Packaging Details: As to clients' requirements Wooden Cases Bundle Packin
- Delivery Time: 30-45 work days
- Payment Terms: L/C, T/T, D/P, D/A
- Supply Ability: 1000+



### Product Specification

- Term Name: Stainless Seamless Steel Pipe 1mm For Handrail Rolling
- Material Grade: Asme S30100, JIS SUS301
- Shape: Round Pipe, Square Pipe, Rectangular Pipe
- Technique: Cold Rolled, Pickling
- Length: 4000mm Or 11000mm
- Size: As Per Requirement
- Welding Line Type: Seamless/Welded
- Highlight: **Asme Stainless Seamless Steel Pipe, JIS SUS301 Seamless Steel Pipe, 1mm S30100 Stainless Steel Pipe**



## Product Description

### Product Description

#### Overview:

JIS SUS301 stainless steel strip is a metastable austenitic stainless steel with complete austenitic structure under the condition of full solution. Through cold deformation processing, the strength and hardness of steel can be improved, and enough plastic and toughness can be retained. In addition, this steel has good rust resistance under atmospheric conditions.

#### Specification:

Approximate Comparative Table							
ASTM/A SME	ISO	USA	JAPAN	BRITAIN	GERMANY		CNS
UNS No.		AISI	JIS	BS	WERKSTOFF DIN		
S30100	14	301	SUS301	301S21	1.431	X12CrNi177	301

Outside Diameter	OD 0.28-1219mm
Thickness	0.08-100mm
Seamless Stainless Steel Pipes	1/8"NB to 32"NB IN
Production Process	Cold Drawn,Bright Anneal.etc
Type	Seamless,welded
Surface	Pickling,Bright
Price Item	EXW,FOB,CNF,CIF etc
Application	1.train 2.Aircraft 3.Conveyor belt 4.Vehicle 5.Bolt 6.Spring 7.Screen
Ends:	Beveled or plain end, square cut, burr free

#### Stainless Steel Seamless Pipe Chemical Component:

The JIS SUS301 chemical component.

(1)C: ≤0.15,(2)Si: ≤1.0,(3)Mn: ≤2.0,(4)Cr: 16.0 ~ 18.0,(5)Ni: 6.0-8.0,(6)S: ≤0.03,(7)P: ≤0.045

#### Mechanical Properties:

Seamless stainless steel pipes

WALL THICKNESS FOR STAINLESS STEEL PIPE & T UBE (ASME B36.10 & B36.19)															
DNm m	DNi in	φm mm	SCH 5S	SCH1 0S	SCH4 0S	ST D	Sch4 0	Sch6 0	Sch8 0s	XS	Sch8 0	Sch1 20	Sch14 0	Sch16 0	XXS
6	1/8	10.3		1.24	1.73	1.73	1.73		2.41	2.41	2.41				
8	1/4	13.7		1.65	2.24	2.24	2.24		3.02	3.02	3.02				
10	3/8	17.1		1.65	2.31	2.31	2.31		3.2	3.2	3.2				
15	1/2	21.3	1.65	2.11	2.77	2.77	2.77		3.73	3.73	3.73			4.78	7.47
20	3/4	26.7	1.65	2.11	2.87	2.87	2.87		3.91	3.91	3.91			5.56	7.82
25	1	33.4	1.65	2.77	3.38	3.38	3.38		4.55	4.55	4.55			6.35	9.09
32	1 1/4	42.2	1.65	2.77	3.56	3.56	3.56		4.85	4.85	4.85			6.35	9.7
40	1 1/2	48.3	1.65	2.77	3.68	3.68	3.68		5.08	5.08	5.08			7.14	10.15
50	2	60.3	1.65	2.77	3.91	3.91	3.91		5.54	5.54	5.54			8.74	11.07

65	2 1/2	76	2.11	3.05	5.16	5.1 6	5.16		7.01	7.01	7.01			9.53	14.0 2
80	3	88.9	2.11	3.05	5.49	5.4 9	5.49		7.62	7.62	7.62			11.13	15.2 4
90	3 1/2	101.6	2.11	3.05	5.74	5.7 4	5.74		8.08	8.08	8.08				
100	4	114.3	2.11	3.05	6.02	6.0 2	6.02		8.56	8.56	8.56	11.13		13.49	17.1 2
125	5	141.3	2.77	3.4	6.55	6.5 5	6.55		9.53	9.53	9.53	12.7		15.88	19.0 5
150	6	168.3	2.77	3.4	7.11	7.1 1	7.11		10.97	10.9 7	10.9 7	14.27		18.26	21.9 5
200	8	219.1	2.77	3.76	8.18	8.1 8	8.18	10.3 1	12.7	12.7	12.7	18.26	20.62	23.01	22.2 3
250	10	273	3.4	4.19	9.27	9.2 7	9.27	12.7	12.7	12.7	15.0 9	21.44	25.4	28.58	25.4
300	12	323.8	3.96	4.57	9.53	9.5 3	10.3 1	14.2 7	12.7	12.7	17.4 8	25.4	28.58	33.32	25.4
350	14	355.6	3.96	4.78		9.5 3	11.1 3	15.0 9		12.7	19.0 5	27.79	31.75	35.71	
400	16	406.4	4.19	4.78		9.5 3	12.7	16.6 6		12.7	21.4 4	30.96	36.53	40.49	
450	18	457	4.19	4.78		9.5 3	14.2 7	19.0 5		12.7	23.8 3	34.93	39.67	45.24	
500	20	508	4.78	5.54		9.5 3	15.0 9	20.6 2		12.7	26.1 9	38.1	44.45	50.01	
550	22	559	4.78	5.54		9.5 3		22.2 3		12.7	28.5 8	41.28	47.63	53.98	
600	24	610	5.54	6.35		9.5 3	17.4 8	24.6 1		12.7	30.9 6	46.02	52.37	59.54	
650	26	660				9.5 3				12.7					
700	28	711				9.5 3				12.7					
750	30	762	6.35	7.92		9.5 3				12.7					
800	32	813				9.5 3	17.4 8			12.7					

Conforms to ANSI B36.19 and ANSI B36.10 standards





#### FAQ:

**Q:** Are you a manufacturer or merely a trader?

**A:** *We are group of companies and owned manufacturer bases and trading company. We specialized in special steel which include alloy structural steel and carbon steel and stainless steel, etc. All material are with high quality and competitive price.*

**Q:** How do you guarantee the quality of your product?

**A:** *Firstly, we can provide the certificates from the third party, such as TUV, CE, if you need. Secondly, we have a complete set of inspection system and every process is checked by QC. Quality is the lifeline of enterprise survival.*

**Q:** Delivery time?

**A:** *We have ready stock for most of material grades in our warehouse. If the material don't have stock, the delivery lead time is about 5-30 days after receiving your prepayment or firm order.*

**Q:** What is the payment term?

**A:** *T/T or L/C.*

**Q:** Can you provide a sample for our testing before confirm the order?

**A:** *Yes. We can provide sample to you for approval before you place an order to us. Free sample is available if we have stock.*

**Q:** Can we visit your company and factory?

**A:** *Yes, warmly welcome! We can book the hotel for you before you come to China and arrange our driver to our airport to pick you up when you come.*



ZHEHENG STEEL

**Wenzhou Zheheng Steel Industry Co.,Ltd**



15858820108



sales@zhehengsteel.com



stainless-steelseamlesspipe.com

No999 .wenzhou airport wenzhou city,zhejiang china