



ZHEHENG STEEL

Wenzhou Zheheng Steel Industry Co.,Ltd
stainless-steelseamlesspipe.com

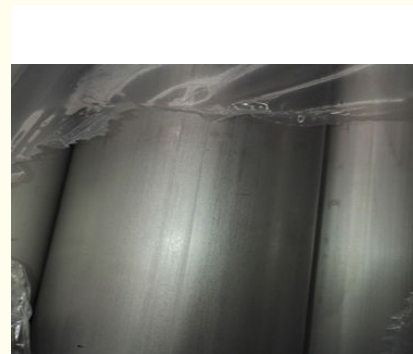
304 316 Welded Stainless Steel Tubing decorative 12000mm

Our Product Introduction

for more products please visit us on stainless-steelseamlesspipe.com

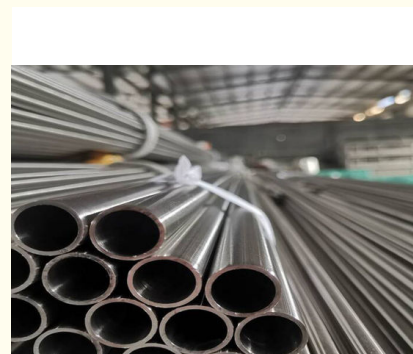
Basic Information

- Place of Origin: Wenzhou
- Brand Name: ZHE HENG
- Certification: ISO9001,CE
- Model Number: 304,304L,304N,304LM,316
- Minimum Order Quantity: 500 kg
- Price: \$1000-4200/Ton
- Packaging Details: Exportsea worthy packing with each bundle tied and protected, Or as to clients' requirements.
- Delivery Time: 30-45 work days
- Payment Terms: L/C, T/T, D/P
- Supply Ability: 1000+



Product Specification

- Term Name: 100% Quality Of 304 Stainless Steel Tubing With Cheap Price
- Shape: Rounde Pipe
- Technique: Cold Rolled Seamless/Welded
- Thickness Tolerance: 1.2mm 1.5mm 2mm
- Length: 1000mm-12000mm
- Size: As Per Requirement
- Welding Line Type: Seamless/welded
- Packing: We Can Negotiate
- Highlight: **316 Welded Stainless Steel Tubing,
12000mm Stainless Steel Tubing,
Welded Decorative Stainless Steel Tubing**



Product Description

Overview

Stainless steel welded pipe is made of precision cold rolled sheet. The wall thickness difference of these cold-rolled sheets is generally about 0.002 inches, so the wall thickness difference is very small, and the wall thickness of the entire pipe is very uniform.

Application

1. When decorative pipes, product pipes and prop pipes, stainless steel welded pipes are usually selected;
2. Conveying water, oil, gas, air and heating hot water or steam and other low pressure systems, usually choose stainless steel welded pipe;
3. Power station, nuclear power plant boiler
4. Stainless steel welded pipe is generally used for liquid transportation below 0.8MPa, and seamless pipe can be used to withstand liquid transportation above 0.8MPa.

Stainless Steel Seamless Pipe Chemical Component

Chemical Composition about stainless steel pipe							
Grade	C ≤	Si ≤	Mn ≤	P ≤	S ≤	Ni ≤	Cr ≤
304	0.08	0.75	2	0.045	0.03	8.00-11.00	18.00-20.00
304L	0.035	0.75	2	0.045	0.03	8.00-13.00	18.00-20.00
316	0.08	1	2	0.045	0.03	10.00-14.00	16.00-18.00
316L	0.035	0.75	2	0.045	0.03	10.00-15.00	16.00-18.00

Mechanical Properties

WALL THICKNESS FOR STAINLESS STEEL PIPE & TUBE (ASME B36.10 & B36.19)															
DNmm	DNin	φmm	SCH5S	SCH10S	SCH40S	STD	Sch40	Sch60	Sch80s	XS	Sch80	Sch100	Sch140	Sch160	XXS
6	1/8	10.3		1.24	1.73	1.73	1.73		2.41	2.41	2.41				
8	1/4	13.7		1.65	2.24	2.24	2.24		3.02	3.02	3.02				
10	3/8	17.1		1.65	2.31	2.31	2.31		3.2	3.2	3.2				
15	1/2	21.3	1.65	2.11	2.77	2.77	2.77		3.73	3.73	3.73			4.78	7.47
20	3/4	26.7	1.65	2.11	2.87	2.87	2.87		3.91	3.91	3.91			5.56	7.82
25	1	33.4	1.65	2.77	3.38	3.38	3.38		4.55	4.55	4.55			6.35	9.09
32	1 1/4	42.2	1.65	2.77	3.56	3.56	3.56		4.85	4.85	4.85			6.35	9.7
40	1 1/2	48.3	1.65	2.77	3.68	3.68	3.68		5.08	5.08	5.08			7.14	10.15
50	2	60.3	1.65	2.77	3.91	3.91	3.91		5.54	5.54	5.54			8.74	11.07
65	2 1/2	76	2.11	3.05	5.16	5.16	5.16		7.01	7.01	7.01			9.53	14.02
80	3	88.9	2.11	3.05	5.49	5.49	5.49		7.62	7.62	7.62			11.13	15.24
90	3 1/2	101.6	2.11	3.05	5.74	5.74	5.74		8.08	8.08	8.08				
100	4	114.3	2.11	3.05	6.02	6.02	6.02		8.56	8.56	8.56	11.13		13.49	17.12
125	5	141.3	2.77	3.4	6.55	6.55	6.55		9.53	9.53	9.53	12.7		15.88	19.05
150	6	168.3	2.77	3.4	7.11	7.11	7.11		10.97	10.97	10.97	14.27		18.26	21.95
200	8	219.1	2.77	3.76	8.18	8.18	8.18	10.31	12.7	12.7	12.7	18.26	20.62	23.01	22.23
250	10	273	3.4	4.19	9.27	9.27	9.27	12.7	12.7	12.7	15.09	21.44	25.4	28.58	25.4

300	12	323.8	3.96	4.57	9.53	9.53	10.31	14.27	12.7	12.7	17.48	25.4	28.58	33.32	25.4
350	14	355.6	3.96	4.78		9.53	11.13	15.09		12.7	19.05	27.79	31.75	35.71	
400	16	406.4	4.19	4.78		9.53	12.7	16.66		12.7	21.44	30.96	36.53	40.49	
450	18	457	4.19	4.78		9.53	14.27	19.05		12.7	23.83	34.93	39.67	45.24	
500	20	508	4.78	5.54		9.53	15.09	20.62		12.7	26.19	38.1	44.45	50.01	
550	22	559	4.78	5.54		9.53		22.23		12.7	28.58	41.28	47.63	53.98	
600	24	610	5.54	6.35		9.53	17.48	24.61		12.7	30.96	46.02	52.37	59.54	
650	26	660				9.53				12.7					
700	28	711				9.53				12.7					
750	30	762	6.35	7.92		9.53				12.7					
800	32	813				9.53	17.48			12.7					





Product packaging



1. Packing type: Carton and wooden case, also be packaged according to customer requirements.
2. Modes of transportation: by sea, by air or land transportation, of course, a small amount can also be by Express.

Our Service



Customer-Oriented:

Sourcing and Researching & Development based on customers' requirements.



Supply chain improvement:

Providing constructive proposals to improve TCO.



Quality Assurance:

Quality & Quantity inspection before shipment.



Delivery Management:

Speedy and accurate product delivery date services, to help customers speed up the finance turnover.

FAQ

Q: Are you a manufacturer or merely a trader?

A: We are group of companies and owned manufacturer bases and trading company. We specialized in special steel which include alloy structural steel and carbon steel and stainless steel, etc. All material are with high quality and competitive price.

Q: How do you guarantee the quality of your product?

A: Firstly, we can provide the certificates from the third party, such as TUV, CE, if you need. Secondly, we have a complete set of inspection system and every process is checked by QC. Quality is the lifeline of enterprise survival.

Q: Delivery time?

A: We have ready stock for most of material grades in our warehouse. If the material don't have stock, the delivery lead time is about 5-30 days after receiving your prepayment or firm order.

Q: What is the payment term?

A: T/T or L/C.

Q: Can you provide a sample for our testing before confirm the order?

A: Yes. We can provide sample to you for approval before you place an order to us. Free sample is available if we have stock.

Q: Can we visit your company and factory?

A: Yes, warmly welcome! We can book the hotel for you before you come to China and arrange our driver to our airport to pick you up when you come.



ZHEHENG STEEL

Wenzhou Zheheng Steel Industry Co.,Ltd



15858820108



sales@zhehengsteel.com



stainless-steelseamlesspipe.com

No999 .wenzhou airport wenzhou city,zhejiang china