



ZHEHENG STEEL

Wenzhou Zheheng Steel Industry Co.,Ltd
stainless-steelseamlesspipe.com



ASTM TP321 Seamless Stainless Tube SCH160 Wear And Corrosion Resistance

Our Product Introduction

for more products please visit us on stainless-steelseamlesspipe.com

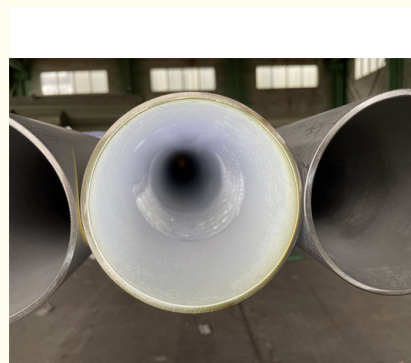
Basic Information

- Place of Origin: CHINA
- Brand Name: Zheheng Steel
- Certification: ISO9001
- Model Number: 88.9mm
- Minimum Order Quantity: Negotiable
- Price: Negotiable
- Packaging Details: In bundles with waterproof material, or wooden crate packing
- Delivery Time: 30DAYS
- Payment Terms: L/C, T/T, D/A, D/P
- Supply Ability: 50TONS/30DAYS



Product Specification

- Material: TP321
- Standard: ASTM, GB, JIS, DIN, EN, AISI
- Shape: SCH160
- Feature: Wear And Corrosion Resistance
- Technique: Cold-drawn
- Use: Lining And Conveying Pipes For Wear-resistant Acid Containers And Wear-resistant Equipment
- Highlight: **ASTM TP321 Seamless Stainless Tube, SCH160 Seamless Stainless Tube, Wear Resistance Seamless Stainless Tube**



Product Description

ASTM TP321 Seamless Stainless Tube Wear and Corrosion Resistance

Zheheng steel supply a wide range of SS 321 / SS 321H Pipes and Tubes to our clients, which are sturdy in construction and ensure long service life.

Stainless Steel 321 Pipes (UNS S32100) is the basic austenitic 18/8 steel (Stainless Steel 304) stabilised by Titanium (321) or Niobium (347) additions. Stainless Steel 321 Tubes is a stabilized stainless steel which offers as its main advantage an excellent resistance to intergranular corrosion following exposure to temperatures in the chromium carbide precipitation range from 800 to 1500 Degree F (427 to 816 Degree C).

The addition of titanium in 321 stainless steel give some desired characteristics:

- 1.Prevents harmful carbide precipitation in the heat affected zone (HAZ) of the weld area
- 2.Imparts partial immunity to inter granular corrosion
- 3.Reduced embrittlement in the HAZ of the weld area

SS 321H Pipes (UNS S32109) is a modification of SS 321 Tubes with a higher carbon content, to provide improved high temperature strength. SS 321H Tubes is the higher carbon (0.04 - 0.10) version of the alloy.

Usage:

Used in chemical, coal and petroleum industries with high corrosion resistance to grain boundaries, outdoor machines, heat-resistant parts of building materials and parts with difficulty in heat treatment, such as:

1. Oil exhaust gas combustion pipeline
2. Engine exhaust pipe
3. Boiler shell, heat exchanger, heating furnace components
4. Muffler parts for diesel engines
5. Boiler pressure vessel
6. Chemical trucks
7. Expansion joints
8. Spiral welded pipe for furnace pipe and dryer
9. Aircraft

Tube Range: 6.35 mm OD To 101.6 mm

OD Gauge: 25 SWG - 10 SWG

Outer Diameter: 3.00 mm - 219.10 mm

Wall Thickness: 0.40 mm - 12.70 mm

Schedules: 5, 10S, 10, 30, 40S, 40, 80, 80S, XS, 160, XXH

Length: Upto 30 meters, Custom Cut Length.

Deviation class	Allowable deviation of standardized outside diameter
D1	±1.5%, MIN±0.75 mm
D2	±1.0%. MIN±0.50 mm
D3	±0.75%. MIN±0.30 mm
D4	±0.50%. MIN±0.10 mm

Stainless steel pipe dimention:

Dimensions for ASME/ANSI Standards															Unit:m m
										B16.9	B16.28	B36.10			
Nominal pipe Size(NPS)		Outside Diameter	Nominal Wall Thickness												
				Sch 5s	SCH10S	Sch20	Sch30	Sch40	STD	Sch80	XS	Sch160	XXS		
32	1.1/4	42.2	1.66	1.65	2.77	-	2.97	3.56	3.56	4.85	4.85	6.35	9.70		
40	1.1/2	48.3	1.90	1.65	2.77	-	3.18	3.68	3.68	5.08	5.08	7.14	10.15		
50	2	60.3	2.38	1.65	2.77	-	3.18	3.91	3.91	5.54	5.54	8.74	11.07		
65	2.1/2	73.0	2.88	2.11	3.05	-	4.78	5.16	5.16	7.01	7.01	9.53	14.02		

Our Product Show:

