



ZHEHENG STEEL

Wenzhou Zheheng Steel Industry Co.,Ltd  
stainless-steelseamlesspipe.com



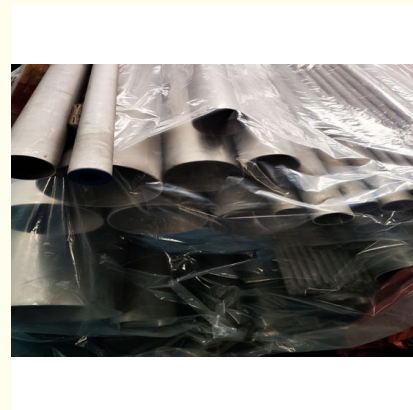
## Industrial Alloy Seamless W. Nr 2.4856 Alloy Pipe Inconel 625 Good Work in Chloride

Our Product Introduction

for more products please visit us on [stainless-steelseamlesspipe.com](http://stainless-steelseamlesspipe.com)

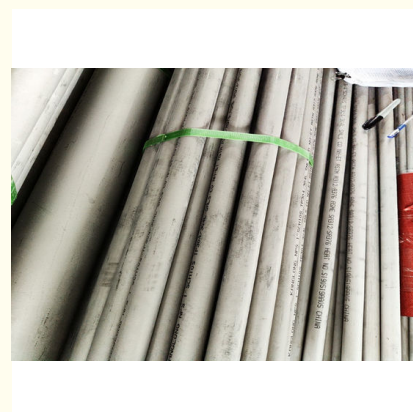
### Basic Information

- Place of Origin: Wenzhou
- Brand Name: zheheng
- Certification: ISO9001 CE
- Model Number: 5mm
- Minimum Order Quantity: 3000
- Price: \$1000-4200/Ton
- Packaging Details: as required
- Delivery Time: 5-8days
- Payment Terms: T/T, L/C
- Supply Ability: 1000+

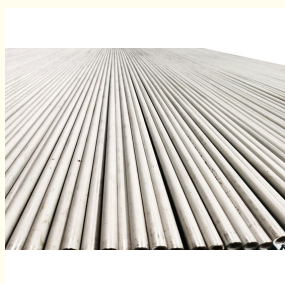


### Product Specification

- Material: Alloy Steel
- Technique: Cold Rolled
- Surface Treatment: Polished
- MOQ: 500kgs
- Surface: Annealing, Pickling, Polishing
- Thickness: Sch5s~Sch160,Xxs
- Alloy: Alloy
- Powder: Not Powder
- Highlight: Inconel 625 Seamless Pipe,  
Industrial Alloy Seamless Pipe,  
W. Nr 2.4856 Seamless Pipe



### More Images



## Product Description

### Features:

Excellent corrosion resistance at elevated and ambient temperatures, excellent resistance of the inorganic acid corrosion performance, excellent resistance of pitting and crevice corrosion, good machining and welding.

usage:

It is widely used in following field:

1) Marine Industries: it is used in sea-water for local mechanical stress attack.

2) Aerospace Industries.

3) Chemical Processing: the organic chemical process parts contains chloride, the digester and bleacher in the use of paper pulp and paper making industry, the equipment and parts in the use of acidic gas environments, acetic acid and anhydride reaction generator, sulfur acid cooling

### INCONEL 625 UNS N06625 seamless welded Alloy pipe

Specifications	ASTM B517 / ASME SB 517
Dimensions	ASTM, ASME and API
Seamless 825 Pipes	4 to 219mm W. T.: 0.5 to 20mm
Welded 825 Pipes	5.0 mm - 1219.2 mm
EFW 825 Pipes	5.0 mm - 1219.2 mm
Size	15"NB TO 150"NB IN
Specialized in	Large Diameter Size
Schedule	SCH5, SCH10, SCH40, STD, SCH80, SCH160
Type	Seamless / ERW / Welded / Fabricated / LSAW Pipes
Form	Round, Hydraulic Etc
Length	Single Random, Double Random & Cut Length.
End	Plain End, Beveled End, Treade

## Packaging & Shipping

1. woven bag

2. wooden case

Delivery time:7-15 days,subject to the quantity.

Delivery time:7-15 days,subject to the quantity.

Equipment and components for sour-gas service

Reactors for acetic acid production

Sulphuric acid coolers

Methylene diphenyl isocyanate (MDI)

Manufacture and processing of technically impure phosphoric acid

Combustion-resistant alloy for high pressure oxygen applications

Inconel X-750 Seamless Pipes/Welded Pipes (UNS N07750, 2.4669, Alloy X-750, inconel X750)

General Description

Inconel X750 is a nickel-chromium alloy similar to Inconel 600 but made precipitation-hardenable by additions of aluminum and titanium. It has good resistance to corrosion and oxidation along with high tensile and creep-rupture properties at temperatures to 1300°F (700°C).

Its excellent relaxation resistance is useful for high-temperature springs and bolts. Used in gas turbines, rocket engines, nuclear reactors, pressure vessels, tooling, and aircraft structures.

## Chemical Composition

Item	seamless pipe
STANDARD	ASTM, AISI, ASME, JIS, DIN, EN, GB, BS, SUS
MATERIAL	inconel 600, inconel 625, inconel 718, nitronic 50, nitronic 60, nimonic 75, nimonic 90, hastelloy C276, hastelloy X, incoloy 800, incoloy 825, etc
OD	1mm-150mm(1/8" -120" )(INCH)
WT	6mm-2500mm(Sch5S-SchXXS)
LENGTH	1). 5.8m, 6m 12m or as required 2). 20feets, 40feets 3). random length or as customer request
TYPE	Seamless& welded

## FAQ

Q: Are you trading company or manufacturer ?

A: We are factory.

Q: How long is your delivery time?

A: Generally it is 5-10 days if the goods are in stock. or it is 15-20 days if the goods are not in stock, it is according to quantity.

Q: Do you provide samples ? is it free or extra ?

A: Yes, we could offer the sample for free charge but do not pay the cost of freight.

Q: What is your terms of payment ?

A: 100% T/T advance. ( For small order.)

B: 30% T/T and balance against copy of documents.

C: 30% T/T advance, balance L/C at sight

D: 30% T/T , balance L/C usance

E: 100% L/C usance.





ZHEHENG STEEL

Wenzhou Zheheng Steel Industry Co.,Ltd



15858820108



sales@zhehengsteel.com



stainless-steelseamlesspipe.com

No999 .wenzhou airport wenzhou city,zhejiang china