



ZHEHENG STEEL

Wenzhou Zheheng Steel Industry Co.,Ltd  
stainless-steelseamlesspipe.com

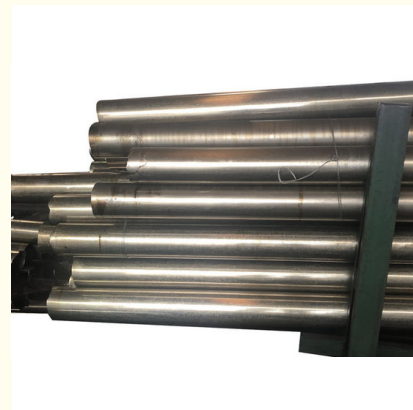
## JIS GB DIN BS ASTM AISI Nickel Based Alloy Seamless Tube And Pipe Inconel600 Incoloy800h Inconel625 For Pipeline Transport

Our Product Introduction

for more products please visit us on [stainless-steelseamlesspipe.com](http://stainless-steelseamlesspipe.com)

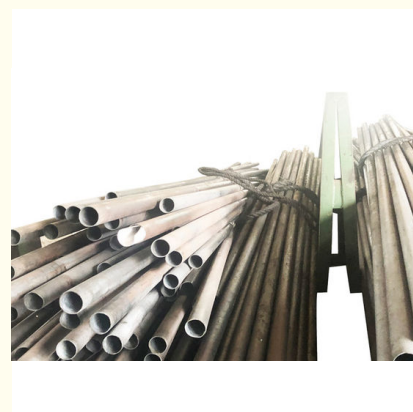
### Basic Information

- Place of Origin: CHINA
- Brand Name: zheheng
- Certification: ISO9001 PED
- Model Number: 5mm
- Minimum Order Quantity: 600
- Price: \$1000-3500/Ton
- Packaging Details: wooden
- Delivery Time: 5-50days
- Payment Terms: T/T, L/C
- Supply Ability: 100000+

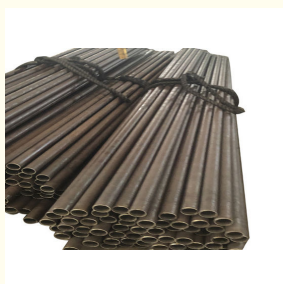
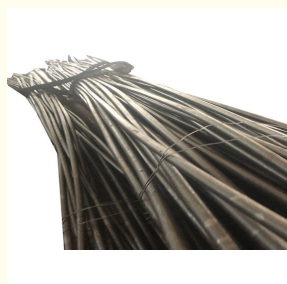


### Product Specification

- Surface: Bright
- Diameter: 4.0X0.3mm
- Specification: 1.0mm-60.0mm
- Trademark: Zheheng
- HS Code: 73044190
- Usage: Pipeline Transport
- Surface Treatment: Annealed And Pickled
- Section Shape: Round
- Highlight: Inconel600 Nickel Based Alloy Seamless Tube,  
Incoloy800h Nickel Based Alloy Seamless Tube,  
JIS Nickel Based Alloy Seamless Tube



### More Images



## Product Description

### General Description

Inconel 600 is a nickel-chromium alloy with excellent resistance to organic acids and is used extensively in fatty acid processing. The high nickel content of Inconel 600 provides good resistance to corrosion under reducing conditions, and its chromium content, resistance under oxidizing conditions. The alloy is virtually immune to chloride stress-corrosion cracking. It is also employed widely in the production and handling of caustic soda and alkali chemicals. Alloy 600 is also an excellent material for high-temperature applications requiring a combination of heat and corrosion resistance. The excellent performance of the alloy in hot halogen environments makes it a popular choice for organic chlorination processes. Alloy 600 also resists oxidation, carburization, and nitridation.

### Nickel base corrosion-resistant alloy.

The main alloy elements are copper, chromium and molybdenum. It has good comprehensive performance, can resist various acid corrosion and stress corrosion. The first application was nickel - copper alloy, also known as monel alloy. In addition, there are nickel-chromium alloys, nickel-molybdenum alloys, nickel-chromium molybdenum alloys, etc. Used to manufacture all kinds of corrosion resistant parts.

Equipment and components for sour-gas service  
Reactors for acetic acid production  
Sulphuric acid coolers  
Methylene diphenyl isocyanate (MDI)  
Manufacture and processing of technically impure phosphoric acid  
Combustion-resistant alloy for high pressure oxygen applications

Product	Thickness	Diameter	Wall Thickness	Width	Length
Plate	0.3mm-30mm			1m/1.22m/1.5m	1m-11.8m
Bar		2mm-300mm			1m-5m
Pipe		6mm-406mm	0.3mm-30mm		
Forging	30mm-300mm	300mm-800mm			0.2m-1m
For the plate, bar and pipe, we can cut for you according to your required length from our stock.					

### Hastelloy C-276 Chemical composition

Alloy	%	Ni	Cr	Mo	Fe	W	Co	C	Mn	Si	V	P	S
C	Min. Max.	balance	14.5-16.5	15-17	4-7	3-4.5	2.5	0.08	1	1	0.35	0.04	0.03
C276	Min. Max.	balance	14.5-16.5	15-17	4-7	3-4.5	2.5	0.01	1	0.08	0.35	0.04	0.03

### Welding of Inconel 600

Any traditional welding procedures can be used to weld Inconel 600 to similar alloys or other metals. Before welding, preheating is needed and also any stain, dust or mark should be cleared by steel wire brush. About 25mm width to welding edge of base metal should be polished to bright.

Recommend filler wire regarding welding Inconel 600: ERNiCr-3

### Size Range

Inconel 600 wire, bar, rod, forging, plate, sheet, tube, fastener and other standard forms are available.

### FAQ

Q: Are you trading company or manufacturer ?

A: We are factory.

Q: How long is your delivery time?

A: Generally it is 5-10 days if the goods are in stock. or it is 15-20 days if the goods are not in stock, it is according to quantity.

Q: Do you provide samples ? is it free or extra ?

A: Yes, we could offer the sample for free charge but do not pay the cost of freight.

Q: What is your terms of payment ?

A: 100% T/T advance. ( For small order.)

B: 30% T/T and balance against copy of documents.

C: 30% T/T advance, balance L/C at sight

D: 30% T/T , balance L/C usance

E: 100% L/C usance.





ZHEHENG STEEL

**Wenzhou Zheheng Steel Industry Co.,Ltd**

☎ 15858820108

✉ [sales@zhehengsteel.com](mailto:sales@zhehengsteel.com)

🌐 [stainless-steelseamlesspipe.com](http://stainless-steelseamlesspipe.com)

No999 .wenzhou airport wenzhou city,zhejiang china