



ZHEHENG STEEL

Wenzhou Zheheng Steel Industry Co.,Ltd
stainless-steelseamlesspipe.com

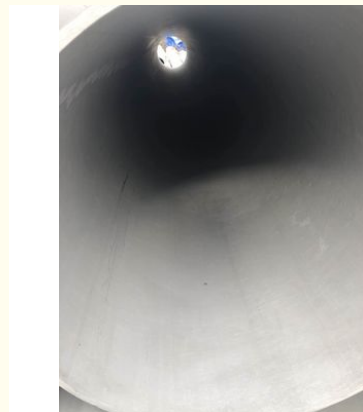
Sand Blast or Snad Rolling Cold Rolling Astm A790 2507 Duplex Stainless Steel Pipe 18m

Our Product Introduction

for more products please visit us on stainless-steelseamlesspipe.com

Basic Information

- Place of Origin: CHINA
- Brand Name: zheheng steel
- Certification: ISO9001 PED
- Model Number: 19mm
- Minimum Order Quantity: Negotiable
- Price: Negotiable
- Packaging Details: as required
- Delivery Time: 5-8days
- Payment Terms: T/T, L/C
- Supply Ability: 1000+

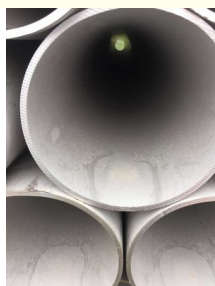
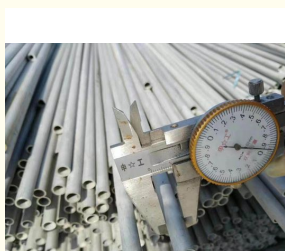


Product Specification

- Steel Grade: Duplex Steel
- Type: Seamless
- Application: Decoration, Construction And Upholstery
- High Light: Welding 2205 Duplex Stainless Steel, Duplex Stainless Steel Tube
- Technique: Cold Drawn
- Surface Treatment: Sand Blast Or Snad Rolling
- Standard: ASTM, AISI, GB, JIS, DIN, EN
- Shape: Round
- Highlight: **2507 Stainless Steel Pipe,**
ASTM A790 Stainless Steel Pipe,
S32750 Duplex Stainless Steel Pipe



More Images



Product Description

Basic Info.	Model NO.	304/316L	Trademark	Zheheng
	Wall Thickness	Sch5/Sch10/Sch40/Sch80/Sch160/Xxs 1.65mm-30.75mm	Transport Package	Nylon Bags or Wooden Cases
	Length	5m-12m	Specification	1/2"-28"(DN15-DN200)
	Customize	Available	Origin	Wenzhou, China

S32750 / 2550 / 1.4507 / X2CRNIMOCUN25-6-3 Duplex Steel Pipe / A789 Seamless and Welded

zheheng steel as professional producer for duplex steel pipes, X2CRNIMOCUN25-6-3 Super Duplex Steel Pipe seamless stainless steel pipes, S32750 duplex steel pipes seamless duplex steel pipe, 1.4507 duplex steel pipe, 2550 duplex steel pipe, ASTM A789, ASTM A790 duplex steel pipe, S37550 super duplex steel pipe, Standard Specification for Seamless and Welded Ferritic/Austenitic Stainless Steel

Tubing for General Service and we are also could supply to you

steel sheets, steel plates, steel coils, steel pipes, steel tubes, steel bars, steel circles, square steel, hexagonal bar, steel tube, steel pipe fittings, flanges, etc. And also we can produce according to the requirements of the customer. The production capacity of our company is about 200000 tons per year.

Details description :

Material:

201.202.301.302.304.304L.310S.316.316L.321.430.430A.309S.2205.2507.

2520.430.410.440.904Lect. Or Customized

Standard: GB, AISI, ASTM, ASME, EN, BS, DIN, JIS

Size: ANSI / ASME size is under, other standard of size is for ready choice, O.D.: 0.23" to 48" (5.8-1219mm) W.T.: 0.04" to 2" (1.0-50.8mm)

Length: Max. 18 Meter, NPS 1/8"-48" Schedule: 5S, 10/10S, 20/20S, 40/40S, 80/80S, 120/120S, 160/160S according to ANSI B36.19/36.10

Surface: Satin Finish (180#, 240#, 320#), Bright Finish (400#, 600#, mirror), Mill Finish (2B), Hairline-Finish (HL/Brushed), Ti-gold, Glossy matt, dull and so on.

Application: Decoration, construction and upholstery, etc

S32750 / 2550 / 1.4507 / X2CRNIMOCUN25-6-3 Super Duplex Steel Pipe chemical composition

 A 789/A 789M - 05a

TABLE 1 Chemical Requirements^a

UNS Designation ^b	C	Mn	P	S	Si	Ni	Cr	Mo	N	Cu	Others
S31200	0.030	2.00	0.045	0.030	1.00	5.5-6.5	24.0-26.0	1.20-2.00	0.14-0.20	---	---
S31260	0.030	1.00	0.030	0.030	0.75	5.5-7.5	24.0-26.0	2.5-3.5	0.10-0.30	0.20-0.80	W 0.10-0.50
S31500	0.030	1.20-2.00	0.030	0.030	1.40-2.00	4.3-5.2	18.0-19.0	2.50-3.00	0.05-0.1	---	---
S31803	0.030	2.00	0.030	0.020	1.00	4.5-6.5	21.0-23.0	2.5-3.5	0.08-0.20	---	---
S32001	0.030	4.00-6.00	0.040	0.030	1.00	1.0-3.0	19.5-21.5	0.60	0.05-0.17	1.00	---
S32003	0.030	2.00	0.030	0.020	1.00	3.0-4.0	19.5-22.5	1.50-2.00	0.14-0.20	---	---
S32101	0.040	4.0-6.0	0.040	0.030	1.00	1.35-1.70	21.0-22.0	0.10-0.80	0.20-0.25	0.10-0.80	---
S32205	0.030	2.00	0.030	0.020	1.00	4.5-6.5	22.0-23.0	3.0-3.5	0.14-0.20	---	---
S32304	0.030	2.50	0.040	0.040	1.00	3.0-5.5	21.5-24.5	0.05-0.60	0.05-0.20	0.05-0.60	---
S32520	0.030	1.50	0.035	0.020	0.80	5.5-8.0	23.0-25.0	3-5	0.20-0.35	0.50-3.00	---
S32550	0.04	1.50	0.040	0.030	1.00	4.5-6.5	24.0-27.0	2.9-3.9	0.10-0.25	1.50-2.50	---
S32750	0.030	1.20	0.035	0.020	0.80	6.0-8.0	24.0-26.0	3.0-5.0	0.24-0.32	0.50	---
S32760	0.05	1.00	0.030	0.010	1.00	6.0-8.0	24.0-26.0	3.0-4.0	0.20-0.30	0.50-1.00	W 0.50-1.00 40 min ^c
S32808	0.030	1.10	0.030	0.030	0.50	7.0-8.2	27.0-27.9	0.80-1.20	0.30-0.40	---	W 2.10-2.50
S32900	0.08	1.00	0.040	0.030	0.75	2.5-5.0	23.0-28.0	1.00-2.00	---	---	---
S32906	0.030	0.80-1.50	0.030	0.030	0.50	5.8-7.5	28.0-30.0	1.50-2.60	0.30-0.40	0.80	---
S32950	0.030	2.00	0.035	0.010	0.60	3.5-5.2	26.0-29.0	1.00-2.50	0.15-0.35	---	---
S39274	0.030	1.00	0.030	0.020	0.80	6.0-8.0	24.0-26.0	2.5-3.5	0.24-0.32	0.20-0.80	W 1.50-2.50
S39277	0.025	0.80	0.025	0.002	0.80	6.5-8.0	24.0-26.0	3.00-4.00	0.23-0.33	1.20-2.00	W 0.80-1.21

we are also supply other steel grade regularly

Production Range:	
Austenitic Steel:	TP304, TP304L, TP304H, TP304N, TP310S, TP316, TP316L, TP316Ti, TP316H, TP317, TP317L, TP321, TP321H, TP347, TP347H, 904L...
Duplex Steel :	S32101, S32205, S31803, S32304, S32750, S32760 Others: TP405, TP409, TP410, TP430, TP439 ...
Russia Standard	08X17T, 08X13, 12X13, 12X17, 15X25T, 04X18H10, 08X20H14C2, 08X18H12B, 10X17H13M2T, 10X23H18, 08X18H10, 08X18H10T, 08X18H12T, 08X17H15M3T, 12X18H10T, 12X18H12T, 12X18H9, 17X18H9, 08X22H6T,

Repair by Welding

For welded pipe of size NPS 6 or larger with a specified wall thickness of 0.188 in. [4.8 mm] or more, weld repairs made with the addition of compatible filler metal may

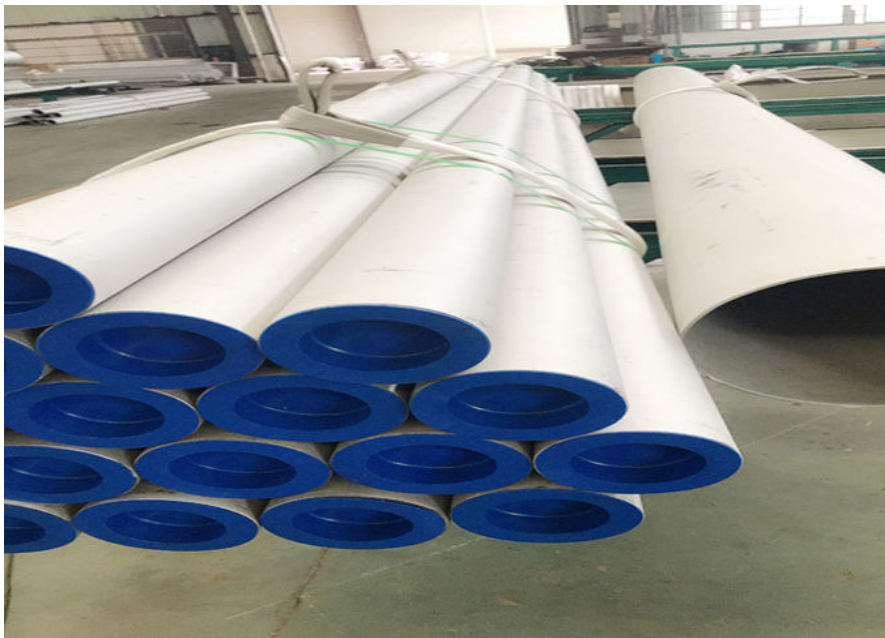
be made to the weld seam with the same procedures specified for plate defects in the section on Repair by Welding of Specification A 999/A 999M.

Weld repairs of the weld seam shall not exceed 20 % of the seam length.

SUPPLEMENTARY REQUIREMENTS FOR PIPE REQUIRING SPECIAL CONSIDERATION

One or more of the following supplementary requirements shall apply only when specified in the purchase order. The purchaser may specify a different frequency of test or analysis than is provided in the supplementary requirement. Subject to agreement between the purchaser and manufacturer, retest and retreatment provisions of these supplementary requirements may also be modified.

product show:



duplex stainless steel welding 2205 duplex stainless super duplex stainless steel
Tag: tube, steel, pipe



ZHEHENG STEEL

Wenzhou Zheheng Steel Industry Co.,Ltd



15858820108



sales@zhehengsteel.com



stainless-steelseamlesspipe.com

No999 .wenzhou airport wenzhou city,zhejiang china