



ZHEHENG STEEL

Wenzhou Zheheng Steel Industry Co.,Ltd
stainless-steelseamlesspipe.com

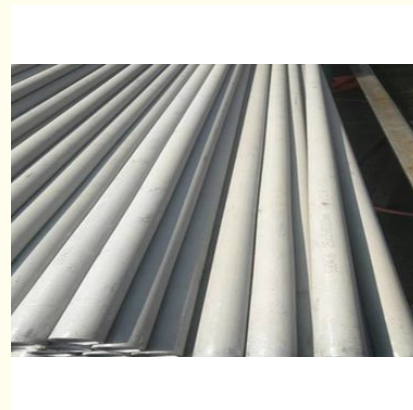
Decoration, Construction And Upholstery ASTM A789 Ferritic 2304 1.4362 Super Duplex Steel Pipe

Our Product Introduction

for more products please visit us on stainless-steelseamlesspipe.com

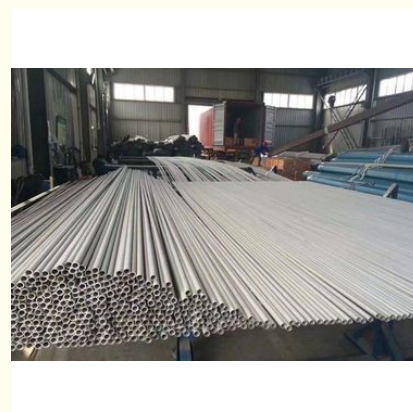
Basic Information

- Place of Origin: CHINA
- Brand Name: zheheng steel
- Certification: ISO9001 PED
- Model Number: 19mm
- Minimum Order Quantity: Negotiable
- Price: Negotiable
- Packaging Details: as required
- Delivery Time: 5-8days
- Payment Terms: T/T, L/C
- Supply Ability: 1000+

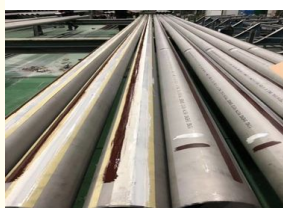


Product Specification

- Steel Grade: Duplex Steel
- Type: Seamless
- Application: Decoration, Construction And Upholstery
- High Light: Welding 2205 Duplex Stainless Steel, Duplex Stainless Steel Tube
- Standard: ASTM, AISI, GB, JIS, DIN, EN
- Certification: ISO, ASTM, EN
- Surface Treatment: Pickling
- Tolerance: +/- 1%
- Highlight: 1.4362 Super Duplex Steel Pipe ,
2304 Super Duplex Steel Pipe ,
Ferritic Duplex Steel Pipe



More Images



Product Description

2304 / 1.4362 Super Duplex Steel Pipe Ferritic Or Austenitic Stainless Cold Drawing

Detailed Product Description

Steel Grade:	Duplex Steel	Standard:	A789
Type:	Seamless	Technique:	Cold Drawing
Application:	Decoration, Construction And Upholstery	Material:	S32750 / 2550 / 1.4507 / X2CRNIMOCUN25-6-3
High Light:	welding 2205 duplex stainless steel , duplex stainless steel tube		

S32750 / 2550 / 1.4507 / X2CRNIMOCUN25-6-3 Duplex Steel Pipe / A789 Seamless and Welded

zheheng steel as professional producer for duplex steel pipes ,X2CRNIMOCUN25-6-3 Super Duplex Steel Pipe seamless stainless steel pipes ,S32750 duplex steel pipes seamless duplex steel pipe ,1.4507 duplex steel pipe, 2550 duplex steel pipe ,, ASTM A789 ,ASTM A790 duplex steel pipe ,s37550 super duplex steel pipe ,Standard Specification for Seamless and Welded Ferritic/Austenitic Stainless Steel

Tubing for General Serviceand we are also could supply to you

steel sheets, steel plates, steel coils, steel pipes, steel tubes, steel bars, steel circles, square steel, hexagonal bar, steel tube, steel pipe fittings, flanges, etc. And also we can produce according to the requirments of the costomer. The production capacity of our company is anout 200000 tons per year. .

Details description :

Material:

201.202.301.302.304.304L.310S.316.316L.321.430.430A.309S.2205.2507.

2520.430.410.440.904Lect. Or Customized

Standard: GB, AISI, ASTM, ASME, EN, BS, DIN, JIS

Size: ANSI /ASME size is under,other standard of size is for ready choice,O.D.:0.23"to 48"(5.8-1219mm)W.T.:0.04"to 2"(1.0-50.8mm)

Length: Max.18 Meter,NPS 1/8"-48" Schedule:5/5S,10/10S,20/20S,40/40S,80/80S,120/120S,160/160S according to ANSI B36.19/36.10

Surface: Satin Finish(180#.240#.320#),Bright Finish(400#.600#,mirror),Mill Finish(2B),Hairline-Finish(HL/Brushed),Ti-gold, Glossy matt,dull and so on.

Application: Decoration, construction and upholstery, etc

S32750 / 2550 / 1.4507 / X2CRNIMOCUN25-6-3 Super Duplex Steel Pipe chemical composition

 A 789/A 789M – 05a

TABLE 1 Chemical Requirements^a

UNS Designation ^b	C	Mn	P	S	Si	Ni	Cr	Mo	N	Cu	Others
S31200	0.030	2.00	0.045	0.030	1.00	5.5-6.5	24.0-26.0	1.20-2.00	0.14-0.20
S31260	0.030	1.00	0.030	0.030	0.75	5.5-7.5	24.0-26.0	2.5-3.5	0.10-0.30	0.20-0.80	W 0.10-0.50
S31500	0.030	1.20-2.00	0.030	0.030	1.40-2.00	4.3-5.2	18.0-19.0	2.50-3.00	0.05-0.1
S31803	0.030	2.00	0.030	0.020	1.00	4.5-6.5	21.0-23.0	2.5-3.5	0.08-0.20
S32001	0.030	4.00-6.00	0.040	0.030	1.00	1.0-3.0	19.5-21.5	0.60	0.05-0.17	1.00	...
S32003	0.030	2.00	0.030	0.020	1.00	3.0-4.0	19.5-22.5	1.50-2.00	0.14-0.20
S32101	0.040	4.0-6.0	0.040	0.030	1.00	1.35-1.70	21.0-22.0	0.10-0.80	0.20-0.25	0.10-0.80	...
S32205	0.030	2.00	0.030	0.020	1.00	4.5-6.5	22.0-23.0	3.0-3.5	0.14-0.20
S32304	0.030	2.50	0.040	0.040	1.00	3.0-5.5	21.5-24.5	0.05-0.60	0.05-0.20	0.05-0.60	...
S32520	0.050	1.50	0.035	0.020	0.80	5.5-8.0	23.0-25.0	3-5	0.20-0.35	0.50-3.00	...
S32550	0.04	1.50	0.040	0.030	1.00	4.5-6.5	24.0-27.0	2.8-3.9	0.10-0.25	1.50-2.50	...
S32750	0.030	1.20	0.035	0.020	0.80	6.0-8.0	24.0-26.0	3.0-5.0	0.24-0.32	0.50	...
S32760	0.05	1.00	0.030	0.010	1.00	6.0-8.0	24.0-26.0	3.0-4.0	0.20-0.30	0.50-1.00	W 0.50-1.00
S32808	0.030	1.10	0.030	0.030	0.50	7.0-8.2	27.0-27.9	0.80-1.20	40 min ^c
S32900	0.08	1.00	0.040	0.030	0.75	2.5-5.0	23.0-28.0	1.00-2.00	0.30-0.40	...	W 2.10-2.50
S32906	0.030	0.80-1.50	0.030	0.030	0.50	5.8-7.5	28.0-30.0	1.50-2.60	0.30-0.40	0.80	...
S32950	0.030	2.00	0.035	0.010	0.60	3.5-5.2	26.0-29.0	1.00-2.50	0.15-0.35
S39274	0.030	1.00	0.030	0.020	0.80	6.0-8.0	24.0-26.0	2.5-3.5	0.24-0.32	0.20-0.80	W 1.50-2.50
S39277	0.025	0.80	0.025	0.002	0.80	6.5-8.0	24.0-26.0	3.00-4.00	0.23-0.33	1.20-2.00	W 0.80-1.21

we are also supply other steel grade regularly

Production Range:	
Austenitic Steel:	TP304,TP304L,TP304H,TP304N, TP310S,TP316,TP316L,TP316Ti,TP316H,TP317,TP317L, TP321, TP321H,TP347, TP347H,904L...
Duplex Steel :	S32101,S32205,S31803,S32304,S32750, S32760 Others:TP405,TP409, TP410, TP430, TP439 ...
Russia Standard	08X17T,08X13,12X13,12X17,15X25T,04X18H10,08X20H14C2, 08X18H125,10X17H13M2T,10X23H18,08X18H10,08X18H10T, 08X18H12T,08X17H15M3T,12X18H10T,12X18H12T,12X18H9, 17X18H9, 08X22H6T,

Repair by Welding

For welded pipe of size NPS 6 or larger with a specified wall thickness of 0.188 in. [4.8 mm] or more, weld repairs made with the addition of compatible filler metal may

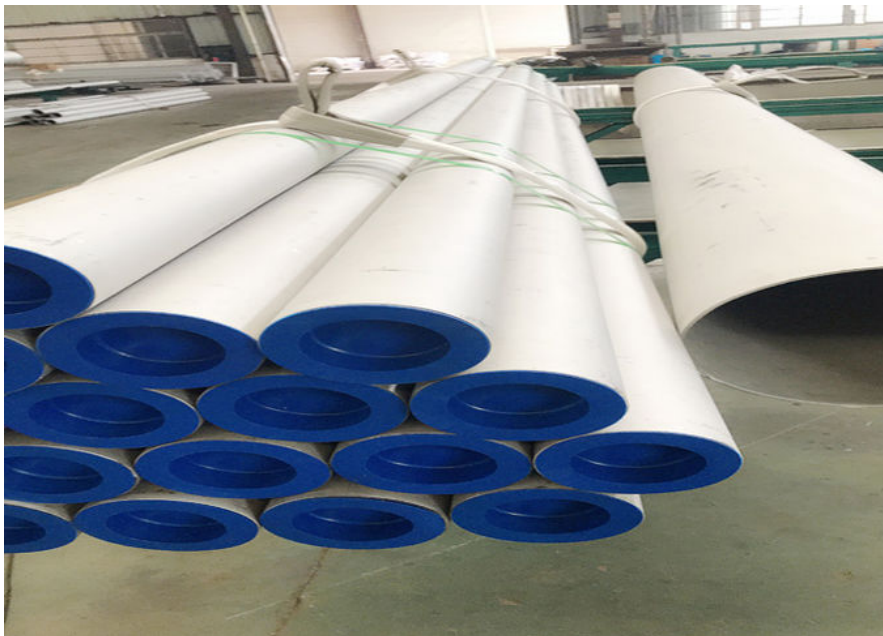
be made to the weld seam with the same procedures specified for plate defects in the section on Repair by Welding of Specification A 999/A 999M.

Weld repairs of the weld seam shall not exceed 20 % of the seam length.

SUPPLEMENTARY REQUIREMENTS FOR PIPE REQUIRING SPECIAL CONSIDERATION

One or more of the following supplementary requirements shall apply only when specified in the purchase order. The purchaser may specify a different frequency of test or analysis than is provided in the supplementary requirement. Subject to agreement between the purchaser and manufacturer, retest and retreatment provisions of these supplementary requirements may also be modified.

product show:



duplex stainless steel

welding 2205 duplex stainless

super duplex stainless steel

Tag: tube,

steel,

pipe

FAQ

Q1: What is your terms of payment?

A: 30% T/T in advance, the balance 70% before delivery. We will show you the photos of products and package before you pay the balance.

Q2: what is the terms of delivery?

A: EXW, FOB, CIF, CFR, DDU

Q3: What is the terms of packing?

A: generally, we pack our goods in bundles or coils with rods or belts, we could also pack the goods as the customers' requirement.

Q4: What is your delivery time?

A: For stocks, we could transport the goods to loading port within 7 days after we received your deposit.

For production period, it usually takes about 15 days-30 days after receiving the deposit.

Q5: Could you produce according to the samples?

A: Yes, we could customer-made by your samples or technique drawings, we could build the mold and fixtures.

Q6: Could you provide the samples?

A: yes, we could provide the free samples on conditons it is available in stocks, however, the the transportation fee is borne by buyer.

Q7: How could you guarantee your products?

A: Each piece of products is manufactured by certified workshops, inspected by Lenser piece by piece according to national QA/QC standard. We also could issue the warranty to customer to guarantee the quality



ZHEHENG STEEL

Wenzhou Zheheng Steel Industry Co.,Ltd

☎ 15858820108

✉ sales@zhehengsteel.com

🌐 stainless-steelseamlesspipe.com

No999 .wenzhou airport wenzhou city,zhejiang china