

## Pipeline Transport Cold Drawing A789 1.4507 Seamless 2507 Duplex Pipe

Our Product Introduction

for more products please visit us on [stainless-steelseamlesspipe.com](http://stainless-steelseamlesspipe.com)

### Basic Information

- Place of Origin: CHINA
- Brand Name: zheheng steel
- Certification: ISO9001 PED
- Model Number: 19mm
- Minimum Order Quantity: Negotiable
- Price: Negotiable
- Packaging Details: as required
- Delivery Time: 5-8days
- Payment Terms: T/T, L/C
- Supply Ability: 1000+

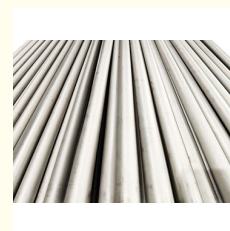
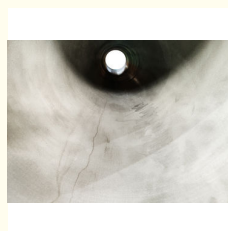
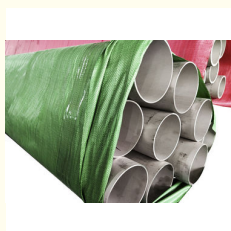


### Product Specification

- Steel Grade: Duplex Steel
- Type: Seamless
- Application: Decoration, Construction And Upholstery
- High Light: Welding 2205 Duplex Stainless Steel, Duplex Stainless Steel Tube
- Usage: Pipeline Transport
- Head Code: Round
- Transport Package: Wooden Cases Or Pallets
- Technique: Cold Drawn
- Highlight: **Seamless 2507 Duplex Pipe, 1.4507 2507 Duplex Pipe, A789 2507 Duplex Pipe**



### More Images



### Product Description

S32750 / 2550 / 1.4507 / X2CRNIMOCUN25-6-3 Duplex Steel Pipe / A789 Seamless and Welded

#### Detailed Product Description

zheheng steel as professional producer for duplex steel pipes ,X2CRNIMOCUN25-6-3 Super Duplex Steel Pipe ,S32750 duplex steel pipes seamless duplex steel pipe ,1.4507 duplex steel pipe, 2507 duplex steel pipe , , AS 32750 duplex steel pipe ,s37550 super duplex steel pipe ,Standard Specification for Seamless and Welded Ferritic/Austenitic Stainless Steel Tubing for General Serviceand we are also could supply to you steel sheets, steel plates, steel coils, steel pipes, steel tubes, steel bars, steel circles, square steel, hexagonal bar, steel tube, steel pipe fittings, flanges, etc. And also we can produce according to the requirments of the costomer. The production capacity of our company is anout 200000

Steel Grade	Duplex Steel	Standard	A789
Type	Seamless	Technique	Cold D
Application	Decoration, Construction And Upholstery	Material	S32750 X2CRN
High Light	Welding 2205 duplex stainless steel, duplex stainless steel tube		

tons per year. .

## Details description :

Material:

201.202.301.302.304.304L.310S.316.316L.321.430.430A.309S.220S.2507.

2520.430.410.440.904Lect. Or Customized

Standard: GB, AISI, ASTM, ASME, EN, BS, DIN, JIS

Size: ANSI /ASME size is under,other standard of size is for ready choice,O.D.:0.23"to 48"(5.8-1219mm)W.T.:0.04"to 2"(1.0-50.8mm)

Length: Max.18 Meter,NPS 1/8"-48" Schedule:5/5S,10/10S,20/20S,40/40S,80/80S,120/120S,160/160S according to ANSI B36.19/36.10

Surface: Satin Finish(180#.240#.320#),Bright Finish(400#.600#,mirror),Mill Finish(2B),Hairline-Finish(HL/Brushed),Ti-gold, Glossy matt,dull and so on.

Application: Decoration, construction and upholstery, etc

**S32750 / 2550 / 1.4507 / X2CRNIMOCUN25-6-3 Super Duplex Steel Pipe chemical composition**

**A 789/A 789M – 05a**

**TABLE 1 Chemical Requirements<sup>a</sup>**

UNS Designation <sup>b</sup>	C	Mn	P	S	Si	Ni	Cr	Mo	N	Cu	Others
S31200	0.030	2.00	0.040	0.030	1.00	5.5-6.5	24.0-26.0	1.20-2.00	0.14-0.20	---	---
S31200	0.030	1.00	0.030	0.030	0.75	5.5-7.5	24.0-26.0	2.5-3.5	0.10-0.30	0.20-0.80	W 0.10-0.50
S31500	0.030	1.20-2.00	0.030	0.030	1.40-2.00	4.3-5.2	18.0-19.0	2.50-3.00	0.05-0.1	---	---
S31603	0.030	2.00	0.030	0.030	1.00	4.5-6.5	21.0-23.0	2.5-3.5	0.08-0.20	---	---
S32001	0.030	4.00-6.00	0.040	0.030	1.00	1.0-3.0	19.5-21.5	0.60	0.05-0.17	1.00	---
S32003	0.030	2.00	0.030	0.030	1.00	3.0-4.0	19.5-22.5	1.50-2.00	0.14-0.20	---	---
S32101	0.040	4.0-6.0	0.040	0.030	1.00	1.35-1.70	21.0-22.0	0.10-0.80	0.20-0.25	0.10-0.80	---
S32205	0.030	2.00	0.030	0.020	1.00	4.5-6.5	22.0-23.0	3.0-3.5	0.14-0.20	---	---
S32304	0.030	2.50	0.040	0.040	1.00	3.0-5.5	21.5-24.5	0.05-0.60	0.05-0.20	0.05-0.60	---
S32350	0.030	1.50	0.035	0.020	0.80	5.5-8.0	23.0-25.0	3.4-	0.20-0.35	0.50-3.00	---
S32550	0.04	1.50	0.040	0.030	1.00	4.5-6.5	24.0-27.0	2.9-3.9	0.10-0.25	1.50-2.50	---
S32750	0.030	1.20	0.035	0.020	0.80	6.0-8.0	24.0-26.0	3.0-5.0	0.24-0.32	0.50	---
S32760	0.05	1.00	0.030	0.010	1.00	6.0-8.0	24.0-26.0	3.0-4.0	0.20-0.30	0.50-1.00	W 0.50-1.00
S32808	0.030	1.10	0.030	0.030	0.50	7.0-8.2	27.0-27.9	0.80-1.20	0.30-0.40	---	40 min <sup>c</sup>
S32900	0.08	1.00	0.040	0.030	0.75	2.5-6.0	23.0-26.0	1.00-2.00	---	---	W 2.10-2.50
S32906	0.030	0.80-1.50	0.030	0.030	0.50	5.8-7.5	28.0-30.0	1.50-2.60	0.30-0.40	0.80	---
S32950	0.030	2.00	0.035	0.010	0.60	3.5-5.2	26.0-29.0	1.00-2.50	0.15-0.35	---	---
S32774	0.030	1.00	0.030	0.020	0.80	6.0-8.0	24.0-26.0	2.5-3.5	0.24-0.32	0.20-0.80	W 1.50-2.50
S32777	0.025	0.80	0.025	0.002	0.60	6.5-8.0	24.0-26.0	3.00-4.00	0.23-0.33	1.20-2.00	W 0.80-1.21

we are also supply other steel grade regularly

### Production Range:

Austenitic Steel:	TP304,TP304L,TP304H,TP304N, TP310S,TP316,TP316L,TP316Ti,TP316H,TP317,TP317L, TP321, TP321H,TP347, TP347H,904L...
Duplex Steel :	S32101,S32205,S31803,S32304,S32750, S32760 Others:TP405,TP409, TP410, TP430, TP439 ...
Russia Standard	08X17T,08X13,12X13,12X17,15X25T,04X18H10,08X20H14C2, 08X18H12S,10X17H13M2T,10X23H18,08X18H10,08X18H10T,08X18H12T,08X17H15M3T,12X18H10T,12X18H12T,12X18H9, 17X18H9, 08X22H6T,

### Repair by Welding

For welded pipe of size NPS 6 or larger with a specified wall thickness of 0.188 in. [4.8 mm] or more, weld repairs made with the addition of compatible filler metal may be made to the weld seam with the same procedures specified for plate defects in the section on Repair by Welding of Specification A 999/A 999M.

Weld repairs of the weld seam shall not exceed 20 % of the seam length.

### SUPPLEMENTARY REQUIREMENTS FOR PIPE REQUIRING SPECIAL CONSIDERATION

One or more of the following supplementary requirements shall apply only when specified in the purchase order. The purchaser may specify a different frequency of test or analysis than is provided in the supplementary requirement. Subject to agreement between the purchaser and manufacturer, retest and retreatment provisions of these supplementary requirements may also be modified.

Q1: Are you a trading company or manufacturer?

A1: WENZHOU YOUJING PIPE FITTINGS CP.,LTD is a industry and trade integration business with the combination of production and trade.

Q2: Can you offer sample for free?

A2: Yes,we can offer free samples.As you only need to bear the expense of freightage.

Q3: Which trade terms can I choose?

A3: FOB, CIF. As for others, we can negotiate accordingly.

Q4: What is your terms of payment ?

A:4 Paypal, Western Union, T/T, LC are all acceptable.We recommend our customer different terms of payment based on different order amount.

Q5: Can you print our trademark on the products?

A5: Yes, we're the professional manufacturer, so the OEM service is available.

Q6: What's the MOQ?

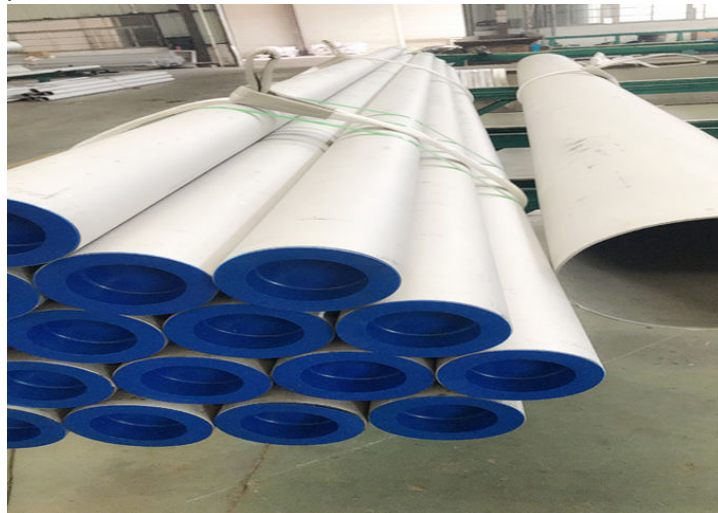
A6: 1pcs MOQ is welcome for starting cooperation.

Q7: How long is the guarantee?

A7: We can offer 12-month long quality guarantee.

Any other questions, please feel free to contact us .

### product show:





ZHEHENG STEEL

Wenzhou Zheheng Steel Industry Co.,Ltd



15858820108



sales@zhehengsteel.com



stainless-steelseamlesspipe.com

No999 .wenzhou airport wenzhou city,zhejiang china