



ZHEHENG STEEL

Wenzhou Zheheng Steel Industry Co.,Ltd
stainless-steelseamlesspipe.com

A789 Standard 1.4362 Duplex Stainless Steel Pipe

Our Product Introduction

for more products please visit us on stainless-steelseamlesspipe.com

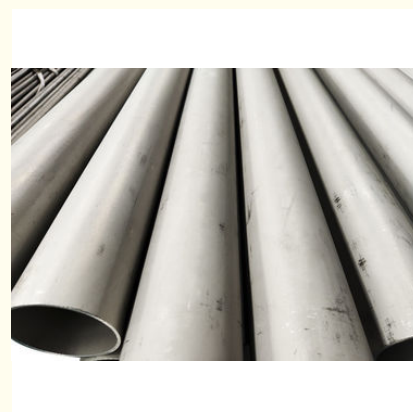
Basic Information

- Place of Origin: CHINA
- Brand Name: zheheng
- Certification: ISO9001 PED
- Model Number: 21mm
- Minimum Order Quantity: Negotiable
- Price: Negotiable
- Packaging Details: In bundles with waterproof material, or wooden crate packing
- Delivery Time: 30 DAYS
- Payment Terms: L/C, T/T, D/A, D/P
- Supply Ability: 50TONS/30DAYS

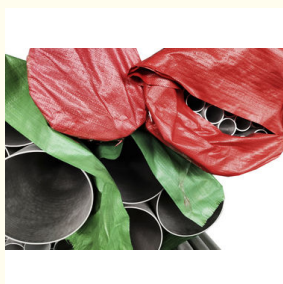


Product Specification

- Steel Grade: 2304 / 1.4362 / X2CRNIN23-4 S32520
- Standard: A789
- Type: Seamless
- Technique: Cold Drawing
- Lead Time: 30 Days
- Material: 1.4362
- Highlight: 1.4362 duplex pipe, A789 duplex pipe



More Images



Product Description

2304 / 1.4362 / X2CRNIN23-4 S32520 Duplex Steel Pipe / A789 Seamless and Welded Ferritic/Austenitic Stainless

zheheng steel professional produce duplex steel pipes ,seamless stainless steel pipes ,seamless duplex steel pipe ,1.4362 duplex steel pipe, 2304 duplex steel pipe ,X2CRNIN23-4 duplex steel pipe, ASTM A789 ,ASTM A790 duplex steel pipe ,s32550 super duplex steel pipe ,and we are also could supply to you

steel sheets, steel plates, steel coils, steel pipes, steel tubes, steel bars, steel circles, square steel, hexagonal bar, steel tube, steel pipe fittings, flanges, etc. And also we can produce according to the requirments of the costomer. The production capacity of our company is anout 200000 tons per year. .

(1)Special design available according to requirement

(2) anti-corrosion and high-temperature resistant with black painting

(3) All the production process are made under the ISO9001:2000 strictly.

Details for description:

Material:

2304 / 1.4362 / X2CRNIN23-4 S32520 .310S.316.316L.321.430.430A.309S.2205.2507.

2520.430.410.440.904Lect. Or Customized

Standard: GB, AISI, ASTM, ASME, EN, BS, DIN, JIS

Size: ANSI /ASME size is under,other standard of size is for ready choice,O.D.:0.23"to 48"(5.8-1219mm)W.T.:0.04"to 2"(1.0-50.8mm)

Length: Max.18 Meter,NPS 1/8"-48" Schedule:5/5S,10/10S,20/20S,40/40S,80/80S,120/120S,160/160S according to ANSI B36.19/36.10

Surface: Satin Finish(180#.240#.320#) ,Bright Finish(400#,600#,mirror),Mill Finish(2B),Hairline-Finish(HL/Brushed),Ti-gold, Glossy matt,dull and so on.

2304 / 1.4362 / X2CRNIN23-4 S32520 Super Duplex Steel Pipe chemical composition

 A 789/A 789M – 05a

TABLE 1 Chemical Requirements^a

UNS Designation ^b	C	Mn	P	S	Si	Ni	Cr	Mo	N	Cu	Others
S31200	0.030	2.00	0.045	0.030	1.00	5.5-6.5	24.0-26.0	1.20-2.00	0.14-0.20	---	---
S31260	0.030	1.00	0.030	0.030	0.75	5.5-7.5	24.0-26.0	2.5-3.5	0.10-0.30	0.20-0.80	W 0.10-0.50
S31500	0.030	1.20-2.00	0.030	0.030	1.40-2.00	4.3-6.2	18.0-19.0	2.50-3.00	0.05-0.1	---	---
S31803	0.030	2.00	0.030	0.020	1.00	4.5-6.5	21.0-23.0	2.5-3.5	0.08-0.20	---	---
S32001	0.030	4.00-6.00	0.040	0.030	1.00	1.0-3.0	19.5-21.5	0.60	0.05-0.17	1.00	---
S32003	0.030	2.00	0.030	0.020	1.00	3.0-4.0	19.5-22.5	1.50-2.00	0.14-0.20	---	---
S32101	0.040	4.0-6.0	0.040	0.030	1.00	1.35-1.70	21.0-22.0	0.10-0.80	0.20-0.25	0.10-0.80	---
S32205	0.030	2.00	0.030	0.020	1.00	4.5-6.5	22.0-23.0	3.0-3.5	0.14-0.20	---	---
S32304	0.030	2.50	0.040	0.040	1.00	3.0-5.5	21.5-24.5	0.05-0.60	0.05-0.20	0.05-0.60	---
S32320	0.030	1.50	0.035	0.020	0.80	5.5-8.0	23.0-25.0	3-5	0.20-0.35	0.50-3.00	---
S32550	0.04	1.50	0.040	0.030	1.00	4.5-6.5	24.0-27.0	2.9-3.9	0.10-0.25	1.50-2.50	---
S32750	0.030	1.20	0.035	0.020	0.80	6.0-8.0	24.0-26.0	3.0-5.0	0.24-0.32	0.50	---
S32760	0.05	1.00	0.030	0.010	1.00	6.0-8.0	24.0-26.0	3.0-4.0	0.20-0.30	0.50-1.00	W 0.50-1.00
S32808	0.030	1.10	0.030	0.030	0.50	7.0-8.2	27.0-27.9	0.80-1.20	0.30-0.40	---	40 min ^c
S32900	0.08	1.00	0.040	0.030	0.75	2.5-5.0	23.0-28.0	1.00-2.00	---	---	W 2.10-2.50
S32906	0.030	0.80-1.50	0.030	0.030	0.50	5.8-7.5	28.0-30.0	1.50-2.60	0.30-0.40	0.80	---
S32950	0.030	2.00	0.035	0.010	0.60	3.5-5.2	26.0-29.0	1.00-2.50	0.15-0.35	---	---
S39274	0.030	1.00	0.030	0.020	0.80	6.0-8.0	24.0-26.0	2.5-3.5	0.24-0.32	0.20-0.80	W 1.50-2.50
S39277	0.025	0.80	0.025	0.002	0.80	6.5-8.0	24.0-26.0	3.00-4.00	0.23-0.33	1.20-2.00	W 0.80-1.21

Details description :

Application:	Decoration, construction and upholstery, etc
Package:	Each tube in a plastic bag with size label outside and pack in small bundles or according to customer request
Lead Time:	7-10days for one FCL Or according to order list detail
Payment:	A: 100% T/T advance. (For small order.) B: 30% T/T and balance against copy of documents. C: 30% T/T advance, balance L/C at sight D: 30% T/T , balance L/C usance E: 100% L/C usance. F: 100% L/C at sight.
Sample:	we could offer the sample for free charge but do not pay the cost of freight.

Permissible Variations in Dimensions

1 Variations in outside diameter, wall thickness, and length from those specified shall not exceed the amounts prescribed in Table 5.

2 The permissible variations in outside diameter given in Table 5 are not sufficient to provide for ovality in thin-walled tubes, as defined in the table. In such tubes, the maximum and minimum diameters at any cross section shall deviate from the nominal diameter by no more than twice the permissible variation in outside diameter given in Table 5; however, the mean diameter at that cross section must still be within the given permissible variation.

Product show:



ZHEHENG STEEL

Wenzhou Zheheng Steel Industry Co.,Ltd



15858820108



sales@zhehengsteel.com



stainless-steelseamlesspipe.com

No999 .wenzhou airport wenzhou city,zhejiang china