



ZHEHENG STEEL

Wenzhou Zheheng Steel Industry Co.,Ltd
stainless-steelseamlesspipe.com



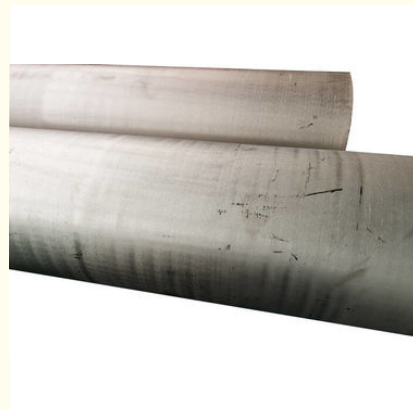
904L X1NiCrMoCu25-20-5 1.4539 sS stainless steel Seamless Pipe 50/63mm 10/12/16 Inch SCH160 ASTM 688

Our Product Introduction

for more products please visit us on stainless-steelseamlesspipe.com

Basic Information

- Place of Origin: china JAPAN, THAILAND, UK, USA
- Brand Name: zheheng
- Certification: NK, PED, AD2000, GOST9941-81
- Model Number: ASTM 688ASTM 789ASTM 790
- Minimum Order Quantity: 100
- Price: Negotiable
- Packaging Details: Standard export seaworthy package or as required.
- Delivery Time: 5days
- Payment Terms: L/C, T/T
- Supply Ability: 200+



Product Specification

- Type: Smells
- Size: All Sizes
- Length: As Required
- Surface: Hairline Brushed
- Production: Cold Drawn
- Material: 904L
- Name: X1NiCrMoCu25-20-5
- Standard: ASTM 688
- Highlight: **304 stainless steel seamless tubing, ss seamless pipe**



More Images



Product Description

904L X1NiCrMoCu25-20-5 1.4539 50/60/63mm 10/12/16inchSCH100 SCH140SCH160 ASTM 688

Zheheng Steel is a manufacturer specializing in the production of stainless steel 904L stainless steel seamless pipes. After years of development, we are able to produce seamless stainless steel pipes of various sizes, large diameter, small diameter, precision, thick wall and thin wall. The products will be produced in strict accordance with ASTM A312 and AISI standards. It is one of the few manufacturers that can provide certificates such as PED, ISO, SGS, TUV, ABS. 904L is one of the most widely used stainless steel varieties. The specific performance and description are as follows.

Material and standard :

UNS N08904, DIN 1.4539, ASTM A240 The new standard will be classified as stainless steel series, the original standard ASME sb-625 will be classified as nickel base alloy series, SUS890L.

Chemical Composition about

904L X1NiCrMoCu25-20-5 1.4539 50/60/63mm 10/12/16inchSCH100 SCH140SCH160 ASTM 688 :

Grade	C ≤	Si ≤	Mn ≤	P ≤	S ≤	Ni ≤	Cr ≤
904L	0.02	1	2	0.045	0.03	23.00-28.00	19.00-23.00

The pipes&tubes dimentions:

nominal dimentions		OUTSIDE DIAMETER	WALL THICKLESS		
N.B	NPS		SCH5S	SCH10S	SCH40S
8	1/4"	13.72		1.65	2.24
10	3/8"	17.15		1.65	2.31
15	1/2"	21.34	1.65	2.11	2.77
20	3/4"	26.67	1.65	2.11	2.87
25	1"	33.4	1.65	2.77	3.38
32	1-1/4"	42.16	1.65	2.77	3.56
40	1-1/2"	48.26	1.65	2.77	3.68
50	2"	60.33	1.65	2.77	3.91
65	2-1/2"	73.03	2.11	3.05	5.16
80	3"	88.9	2.11	3.05	5.49
90	3-1/2"	101.6	2.11	3.05	5.74
100	4"	114.3	2.11	3.05	6.02
125	5"	141.3	2.77	3.4	6.55
150	6"	168.28	2.77	3.4	7.11
200	8"	219.08	2.77	3.76	8.18

Application about our product --

904L X1NiCrMoCu25-20-5 1.4539 50/60/63mm 10/12/16inchSCH100 SCH140SCH160 ASTM 688:

chemical engineering,
petroleum
food,
nuclear power,
aerospace,
environmental protection,
boiler,
gas,
war industry,
machinery,

ship building

...

Metallographic structure of 904L stainless steel:

904L is a complete austenitic structure, and compared with austenitic stainless steel with high molybdenum content, 904L is not sensitive to the precipitation of ferrite and gray phase.

Physical and mechanical properties:

Density: 8.0g/cm³. Tensile strength:

≥ 520 Mpa. Elongation:


$\geq 35\%$. Corrosion resistance of 904L


The picture of our products:




ZHEHENG STEEL

Wenzhou Zheheng Steel Industry Co.,Ltd

 15858820108

 sales@zhehengsteel.com

 stainless-steelseamlesspipe.com

No999 .wenzhou airport wenzhou city,zhejiang china