



ZHEHENG STEEL

Wenzhou Zheheng Steel Industry Co.,Ltd
stainless-steelseamlesspipe.com

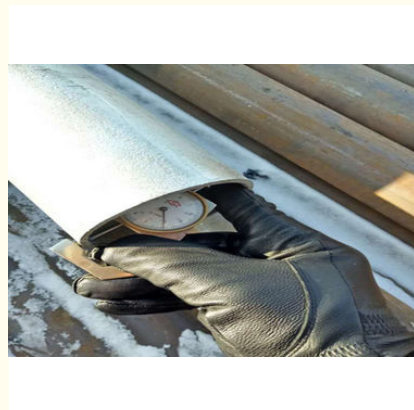
Astm A335 P11 Ferritic Alloy Steel Pipe Two Inch With Black Painted Cold Drawing

Our Product Introduction

for more products please visit us on stainless-steelseamlesspipe.com

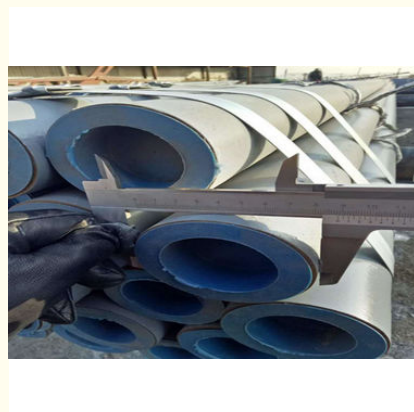
Basic Information

- Place of Origin: CHINA
- Brand Name: zheheng
- Certification: ISO9001 PED
- Model Number: 60mm
- Minimum Order Quantity: Negotiable
- Price: Negotiable
- Packaging Details: In bundles with waterproof material, or wooden crate packing
- Delivery Time: 30 DAYS
- Payment Terms: L/C, T/T, D/A, D/P
- Supply Ability: 50TONS/30DAYS



Product Specification

- Material: P11
- Standard: Astm A335 P11
- Type: Seamless
- Technique: Cold Drawing
- OD: 2 Inch
- WT: 2.77MM
- Highlight: stainless steel metal pipe, large stainless steel pipe



Product Description

astm a335 p11 seamless steel pipe 2 inch seamlesspipe with black painted

We zheheng steel is one of exporter ,manufacturer ,stockist .supply of ASTM A335 p11 seamless alloy pipe,p11 seamless pipe p11 alloy pipe, p11 seamless alloy steel pipe,A335 p11 seamless alloy steel pipe exporter,p11 ss seamless alloy steel pipe supplier ,according to standard ASME SA210,ASME SA213,ASTM SA335, ASTMA335/A335m,ASTMA213/A213m,DIN 17175

Package:Standard export seaworthy package or as required.

Delivery time:Prompt delivery or as the order quantity.

Export to

Alloy steel pipe applies to petroleum,chemical industry, electric power, boiler, high temperature resistant, low temperature resistant,corrosion resistant seamless steel pipe used.Alloy steel pipealso can made according to the customer.

Container size:

20ft GP:5898mm(Length)x2352mm(Width)x2393mm(High) 24-26CBM

40ft GP:12032mm(Length)x2352mm(Width)x2393mm(High) 54CBM

40ft HC:12032mm(Length)x2352mm(Width)x2698mm(High) 68CBM

Item	Cold Rolled / Cold Drawn alloy steel seamless pipe	
Standard	JISG3467-88,JISG3458-88,GB3087,GB6479-2000,GB9948-2006, GB5310-95,GB9948-88,ASME SA210,ASME SA213,ASTM SA335,ASTMA335/A335m,ASTMA213/A213m,DIN 17175	
Model No.	12Cr1MoV,P2(10CrMo910),T91,P91,P9,T9,Cr5Mo,15CrMo,P11,P12,13CrMo44,25CrMo,30CrMo,40CrMo,12CrMo,X12CrMo91,12Cr2Mo	
Description	Surface	black painted,PE coated,galvanized
	Length	6m,5.8m,11.8m,12m, or as required
	Wall Thickness	1-120mm
	Outer Diameter	6-1200mm
Trade terms	Payment terms	T/T,L/C,western union
	Price terms	FOB,CIF,CFR,Ex-work,CNF

zheheng steel Chemical assurance

1.Each lot of raw materials will be tested by spectrometer before put in storage.

2.100%PMI the mother pipe to ensure we put right material.

2.100%PMI the finished pipe again to ensure we produced right grade

Grade	C	Si	Mn	P	S	Cr	Mo
P5	Max.0.15	Max.0.50	0.3-0.6	Max.0.025	Max.0.025	4--6	0.45-0.65
P11	0.05-0.15	0.5-1.0	0.3-0.6	Max.0.025	Max.0.025	1.0-1.5	0.44-0.65
P12	0.05-0.15	Max.0.50	0.3-0.61	Max.0.025	Max.0.025	0.8-1.25	0.44-0.65
P22	0.05-0.15	Max.0.50	0.3-0.6	Max.0.025	Max.0.025	1.9-2.6	0.87-1.13
Mechanical properties							
Grade	Yield point (Mpa)	Tensile strength (Mpa)	Elongation (%)	Impact value(J)			
P5	≥205	≥415	See table	≥35			
P11	≥205	≥415	See table	≥35			
P12	≥220	≥415	See table	≥35			
P22	≥205	≥415	See table	≥35			

Heat Treatment Assurance

A full-automatic natural gas furnace with 24 meters in length.The real temperature tolerance could be within 10°C.

NOTE —It is recommended that the temperature for tempering should

be at least 100°F [50°C] above the intended service temperature; consequently, the purchaser should advise the manufacturer if the service temperature is to be over 1100°F [600°C].

Pipe of Grades P1, P2, and P12, either hot finished or

cold drawn, may be given a final heat treatment at 1200°F[650°C] to 1300°F [705°C] instead of heat treatments specified All pipe of Grades P5c shall be given a final heat treatment in the range from 1325°F [715°C] to 1375°F[745°C].

Product show:



ZHEHENG STEEL

Wenzhou Zheheng Steel Industry Co.,Ltd

☎ 15858820108

✉ sales@zhehengsteel.com

🌐 stainless-steelseamlesspipe.com

No999 .wenzhou airport wenzhou city,zhejiang china