



ZHEHENG STEEL

Wenzhou Zheheng Steel Industry Co.,Ltd  
stainless-steelseamlesspipe.com



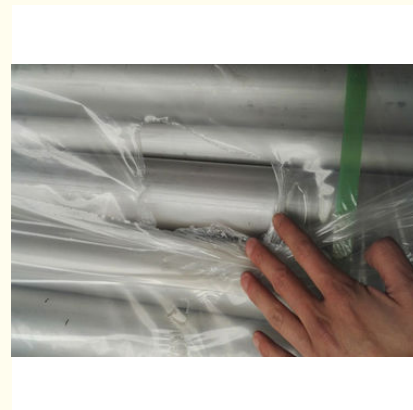
## TP304 / 1.4301 Stainless Steel Welded Tube , ASTM / A312 Thick Wall Stainless Tube

Our Product Introduction

for more products please visit us on [stainless-steelseamlesspipe.com](http://stainless-steelseamlesspipe.com)

### Basic Information

- Place of Origin: CHINA
- Brand Name: zheheng
- Certification: ISO9001 PED
- Model Number: 8"\*sch10s
- Minimum Order Quantity: Negotiable
- Price: Negotiable
- Packaging Details: In bundles with waterproof material, or wooden crate packing
- Delivery Time: 30 DAYS
- Payment Terms: L/C, T/T, D/A, D/P
- Supply Ability: 100TONS/30DAYS



### Product Specification

- Material: TP304 / S30400 / 1.4301 / X5RCI18-10
- Standard: ASTM / A312 / A269 / A213
- Type: Seamless
- Technique: Cold Drawing
- Trade Terms: FOB,CNF,CIF
- Certificates: BV,DNV,NK,LR,ABS
- Highlight: **welding stainless tubing,  
welding thin stainless steel tube**



## Product Description

### TP304 / S30400 / 1.4301 / X5RCI18-10 Stainless Steel Welded Tube ASTM / A312 / A269 / A213 standard

Zheheng steel is a manufacturer and trader for Annealed and Pickled Thin Wall Welded Stainless Steel Pipe, with grade TP304/304L, TP316/316L, the products are exported to over 30 countries worldwide.

ITEM: TP304 / S30400 / 1.4301 / X5RCI18-10 Welded Stainless Steel Pipe ASTM / A312 / A269 / A213 standard

Brand: RONSCO,BAOSTEEL, JISCO, TISCO, etc.

Material: 201,202,301,302,304,304L,310S,316,316L,321,430,430A,309S,2205,2507,2520,430,410,440,904Lect. Or Customized

Standard: GB, AISI, ASTM, ASME, EN, BS, DIN, JIS

Size: ANSI /ASME size is under,other standard of size is for ready choice,O.D.:0.23"to 48"(5.8-1219mm)W.T.:0.04"to 2"(1.0-50.8mm)

#### Product Details:

|              |                                                                                                                                                                                                                     |                                                                                                                                                        |
|--------------|---------------------------------------------------------------------------------------------------------------------------------------------------------------------------------------------------------------------|--------------------------------------------------------------------------------------------------------------------------------------------------------|
| 1            | Standard                                                                                                                                                                                                            | ASTM A213, A312, ASTM A269,ASTM A778, ASTM A789, DIN 17456,DIN 17457,DIN 17459, JIS G3459, JIS G3463, GOS T9941,<br><br>EN 10216, BS3605, GB13296,etc. |
| 2            | Material                                                                                                                                                                                                            | 201,202,301,304,304L,304N,XM21,304LN,309S,310S,316,316Ti,<br><br>316L,316N,316LN,317,317L,321,329,etc.                                                 |
|              |                                                                                                                                                                                                                     |                                                                                                                                                        |
| Length:      | Max.18 Meter,NPS 1/8"-48"<br>Schedule:5/5S,10/10S,20/20S,40/40S,80/80S,120/120S,160/160S according to ANSI B36.19/36.10                                                                                             |                                                                                                                                                        |
| Surface:     | Satin Finish(180#.240#.320#),Bright Finish(400#,600#,mirror),Mill Finish(2B),Hairline-Finish(HL/Brushed),Ti-gold, Glossy matt,dull and so on.                                                                       |                                                                                                                                                        |
| Application: | Decoration, construction and upholstery, etc                                                                                                                                                                        |                                                                                                                                                        |
| Package:     | Each tube in a plastic bag with size label outside and pack in small bundles or according to customer request                                                                                                       |                                                                                                                                                        |
| Lead Time:   | 7-10days for one FCL Or according to order list detail                                                                                                                                                              |                                                                                                                                                        |
| Payment:     | A: 100% T/T advance. ( For small order.) B: 30% T/T and balance against copy of documents.<br>C: 30% T/T advance, balance L/C at sight D: 30% T/T , balance L/C usance<br>E: 100% L/C usance. F: 100% L/C at sight. |                                                                                                                                                        |
| Sample:      | we could offer the sample for free charge but do not pay the cost of freight.                                                                                                                                       |                                                                                                                                                        |

#### What is stainless steel ?

Stainless steels are defined as ferrous alloys with the addition of at least 10.5% chromium by weight and are essentially low carbon steels containing significant amounts of chromium. It is the addition of chromium that gives this type of steel its corrosion resisting properties. The chromium content of the steel allows the formation of an invisible corrosion resistant chromium oxide film on the steel surface. If damaged mechanically or chemically this film is self-healing providing that oxygen, even in very small amounts, is present. The corrosion resistance of stainless steel can be enhanced along with providing other useful properties by increasing the chromium content and by adding other elements such as molybdenum, nickel, and nitrogen.

ZHEHENG STEEL has passed approved by ABS, DNV, GL, BV, PED 97/23/EC, AD2000-WO, GOST9941-81, CCS, TS, CEN, ISO9001-2008, ISO 14001-2004 With good quality and competitive price, we warm a good reputation in domestic and international markets. We hope to build a good and long relationship with customers from home and abroad.



ZHEHENG STEEL

**Wenzhou Zheheng Steel Industry Co.,Ltd**



15858820108



[sales@zhehengsteel.com](mailto:sales@zhehengsteel.com)



[stainless-steelseamlesspipe.com](http://stainless-steelseamlesspipe.com)

No999 .wenzhou airport wenzhou city,zhejiang china